



# 963

## Track Loader

# Technical Specifications

Configurations and features may vary by region. Please consult your Cat® dealer for availability in your area.

## Table of Contents

### 963 Track Loader

<b>Specifications</b> .....	<b>3</b>	Weights and Dimensions .....	4
Engine .....	3	Buckets .....	6
Air Conditioning .....	3	Track .....	8
Drive System .....	3	Ripper .....	8
Implement System .....	3	Standards .....	8
Service Refill Capacities .....	3	Operating Specifications with Pallet Forks .....	9
Drawbar Pull .....	3	<b>Standard and Optional Equipment</b> .....	<b>10</b>

### 963 Track Loader – Waste Handler/Demolition Configuration

<b>Key Features and Benefits</b> .....	<b>13</b>	Heavy Duty Enhanced Cleaning Waste Handler .....	15
<b>Specifications</b> .....	<b>14</b>	Extreme Service Waste Handler or Demolition .....	15
Engine .....	14	Dimensions .....	16
Air Conditioning .....	14	Buckets .....	17
Drive System .....	14	Track .....	18
Implement System .....	14	Ripper .....	18
Service Refill Capacities .....	14	Waste Handler Features .....	19
Standards .....	15	<b>Standard and Optional Equipment</b> .....	<b>20</b>
Heavy Duty Waste Handler .....	15		

(continued on next page)

# 963 Track Loader Table of Contents

## Table of Contents *(continued)*

### 963 Track Loader – Ship Hold Configuration

<b>Key Features and Benefits</b> .....	<b>23</b>	Track .....	25
<b>Specifications</b> .....	<b>24</b>	Weights and Dimensions .....	25
Engine .....	24	Standards .....	25
Air Conditioning .....	24	Dimensions .....	26
Drive System .....	24	Blades .....	26
Implement System .....	24	Buckets .....	27
Service Refill Capacities .....	24	Operating Specifications with Pallet Forks .....	28
Drawbar Pull .....	24	<b>Standard and Optional Equipment</b> .....	<b>29</b>

### 963 Track Loader – Partial Steel Mill Configuration

<b>Key Features and Benefits</b> .....	<b>32</b>	Service Refill Capacities .....	33
<b>Specifications</b> .....	<b>33</b>	Drawbar Pull .....	33
Engine .....	33	Weights and Dimensions .....	34
Air Conditioning .....	33	Buckets .....	35
Drive System .....	33	Standards .....	35
Implement System .....	33	<b>Standard and Optional Equipment</b> .....	<b>36</b>

# 963 Track Loader Specifications

## Engine

Engine Model	Cat® C7.1	
Emissions	U.S. EPA Tier 4 Final/ EU Stage V/Japan 2014/ Korea Tier 4 Final	
Build Number	12A	
Net Power – ISO 9249:2007/ SAE J1349:2011	151 kW	202 hp
Net Power – ISO 9249:2007/ SAE J1349:2011 (DIN)	204 mhp	
Gross Power SAE J1995:2014	170 kW	228 hp
Engine Power ISO 14396:2002	168 kW	225 hp
Engine Power ISO 14396:2002 (DIN)	227 mhp	
Bore	105 mm	4.1 in
Stroke	135 mm	5.3 in
Displacement	7.01 L	427.8 in <sup>3</sup>

- Engine power at 1,800 rpm.
- Inline six-cylinder diesel engine with twin turbos, charged with ATAAC and engine mounted aftertreatment.
- No derating required up to 3000 m (9,842 ft) altitude.
- The net power advertised is the power available at the flywheel when the engine is equipped with fan running up to maximum speed, alternator, air cleaner and aftertreatment.
- All non-road Tier 4 Interim and Final, Stage IIIB, IV and V, Japan 2014 (Tier 4 Final) and Korea Tier 4 Final diesel engines are required to use only Ultra Low Sulfur Diesel (ULSD) fuels containing 15 ppm EPA/10 ppm EU (mg/kg) sulfur or less. Biodiesel blends up to B20 (20% blend by volume) are acceptable when blended with 15 ppm (mg/kg) sulfur or less ULSD. B20 should meet ASTM D7467 specification (biodiesel blend stock should meet Cat biodiesel spec, ASTM D6751 or EN 14214). Cat DEO-ULS™ or oils that meet the Cat ECF-3, API CJ-4, and ACEA E9 specification are required. Consult your OMM for further machine specific fuel recommendations.
- Diesel Exhaust Fluid (DEF) used in Cat Selective Catalytic Reduction (SCR) systems must meet the requirements outlined in the International Organization for Standardization (ISO) standard 22241.

## Air Conditioning

The air conditioning system on this machine contains the fluorinated greenhouse gas refrigerant R134a (Global Warming Potential = 1430). The system contains 1.1 kg of refrigerant which has a CO<sub>2</sub> equivalent of 1.573 metric tons.

## Drive System

Description	Electronically controlled Hydrostatic drive with two variable displacement bent axis motors and two variable displacement slipper-type axial piston pumps
Travel Speed	Infinite variable speed from 0 to 10 km/h (0 to 6.2 mph)
Relief Valve Setting	47 500 kPa    6,890 psi

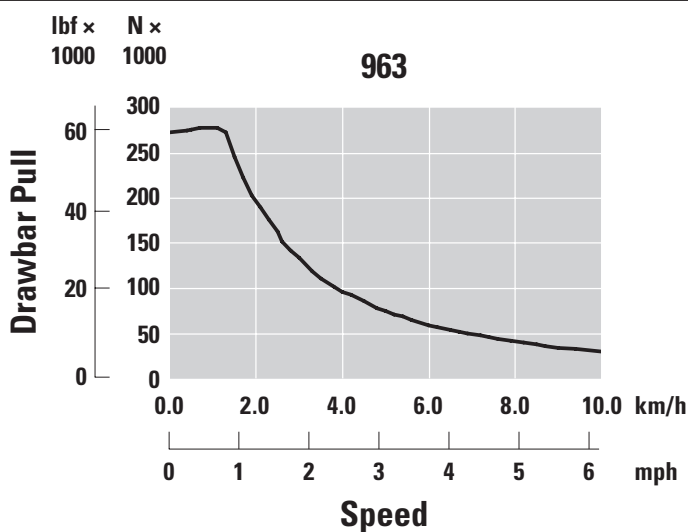
## Implement System

Description	Load sensing, variable displacement piston pump
Maximum Continuous Flow	256 L/min    56.3 gal/min at 1,800 rpm    at 1,800 rpm
Maximum Pressure	28 000 kPa    4,061 psi
Filter System	Implement return filter

## Service Refill Capacities

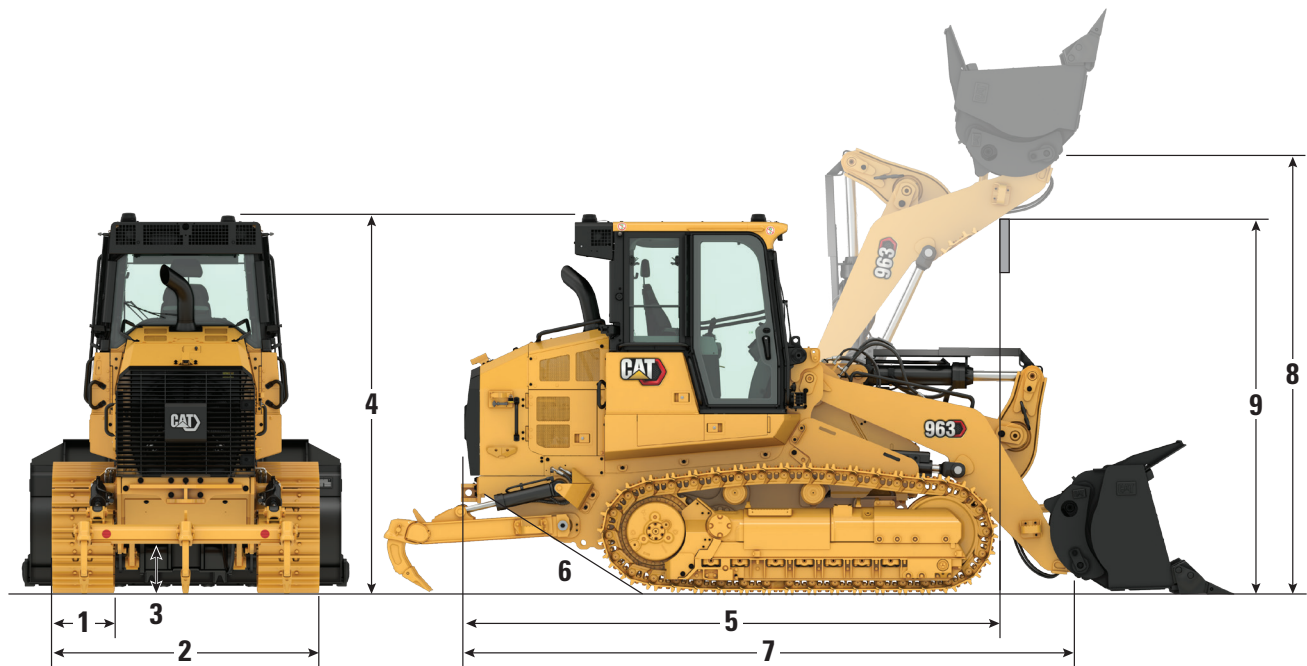
Fuel Tank	320 L	84.5 gal
DEF Tank	16 L	4.2 gal
Cooling System	32 L	8.5 gal
Crankcase (with filter)	16.5 L	4.4 gal
Final Drive (each)	15 L	4.0 gal
Hydraulic Tank	90 L	23.7 gal
Pivot Shaft	1.8 L	0.5 gal

## Drawbar Pull



# 963 Track Loader Specifications

## Weights and Dimensions



	Standard		Low Ground Pressure (LGP)	
Operating Weight <sup>1</sup>	20 358 kg	44,881 lb	22 762 kg	50,181 lb
Shipping Weight	18 468 kg	40,715 lb	20 440 kg	45,062 lb
<b>1 Track Shoe Width:</b>				
Standard <sup>2</sup>	550 mm	22 in	—	—
LGP	—	—	800 mm	31 in
Narrow <sup>2</sup>	450 mm	18 in	—	—
Track Rollers – Each Side	7		7	
Number of Shoes – Each Side	38		38	
Track on Ground	2542 mm	100 in	2542 mm	100 in
Ground Pressure:				
Standard Shoes	63.0 kPa	9.1 psi	48.5 kPa	7.0 psi
Narrow Shoes	77.0 kPa	11.2 psi	—	—

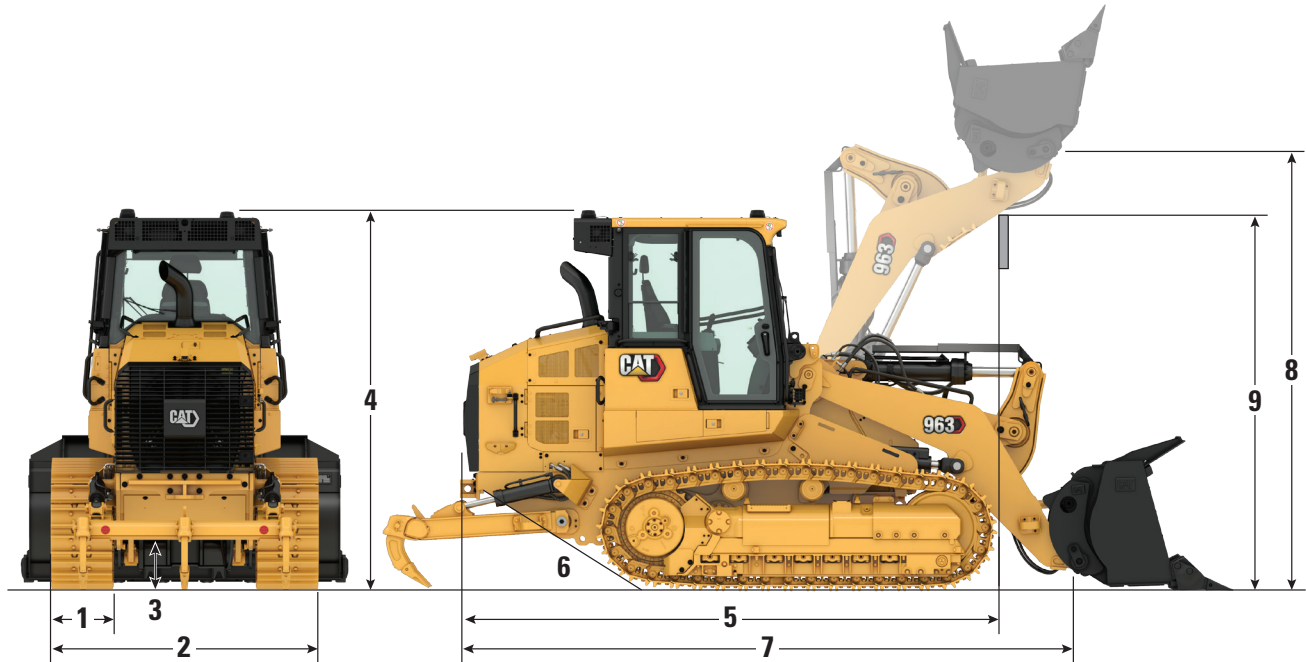
<sup>1</sup>Operating weight: machine with construction package, general purpose bucket with teeth and segments, lubricants, 100% fuel tank and 75 kg (165 lb) operator.

<sup>2</sup>Single or double grouser, with or without center holes.



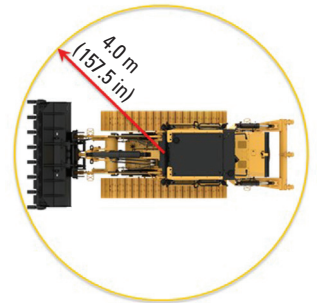
# 963 Track Loader Specifications

## Weights and Dimensions *(continued)*



### 2 Overall Machine Width (without bucket):

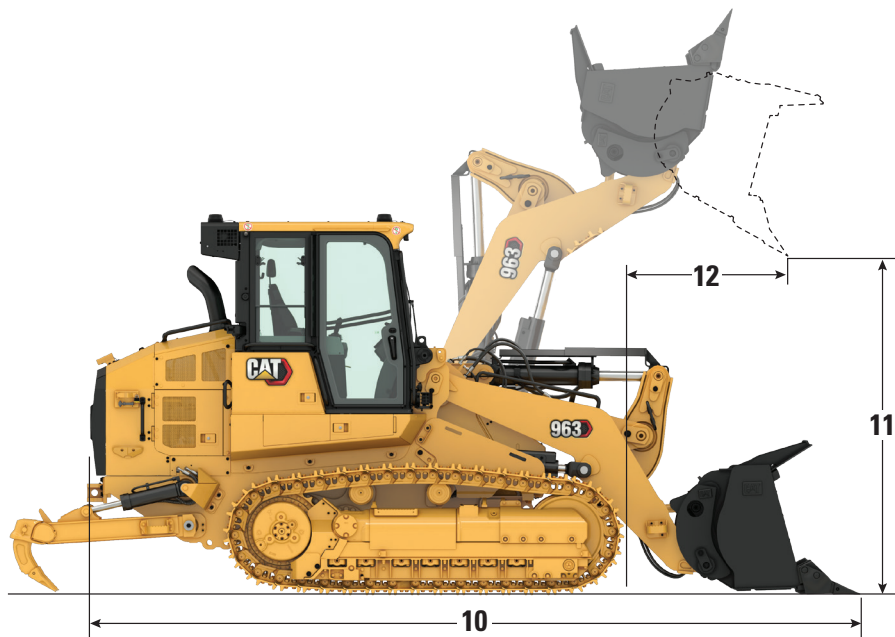
Minimum: Standard Gauge (450 mm/17.7 in shoes)	2300 mm	90.5 in
Maximum: Wide Gauge (800 mm/31.5 in shoes)	2900 mm	114.2 in
<b>3</b> Ground Clearance	471 mm	18.5 in
<b>4</b> Machine Height to Top of Cab	3325 mm	130.9 in
<b>5</b> Machine Length to Front of Tracks (including rear bumper)	4943 mm	194.6 in
with Ripper, Add	586 mm	23.0 in
<b>6</b> Ramp Angle	29°	
<b>7</b> Overall Shipping Length (without bucket)	5841 mm	230 in
<b>8</b> Hinge Pin Height at Maximum Lift	3940 mm	155.1 in
<b>9</b> Lift Arm Clearance at Maximum Lift	3590 mm	141.3 in
Turning Radius	4.0 m	157.5 in



Bucket and attachment offerings may vary. Please consult your Cat dealer for availability.

# 963 Track Loader Specifications

## Buckets



### The Right Tool for the Job

All buckets can be used for digging, stump removal, loading, carrying, leveling, etc. Some buckets are more specialized:

Performance Buckets – optimized for loading and carrying

Multi-Purpose (MP) – grabbing material and grading with the clamp open

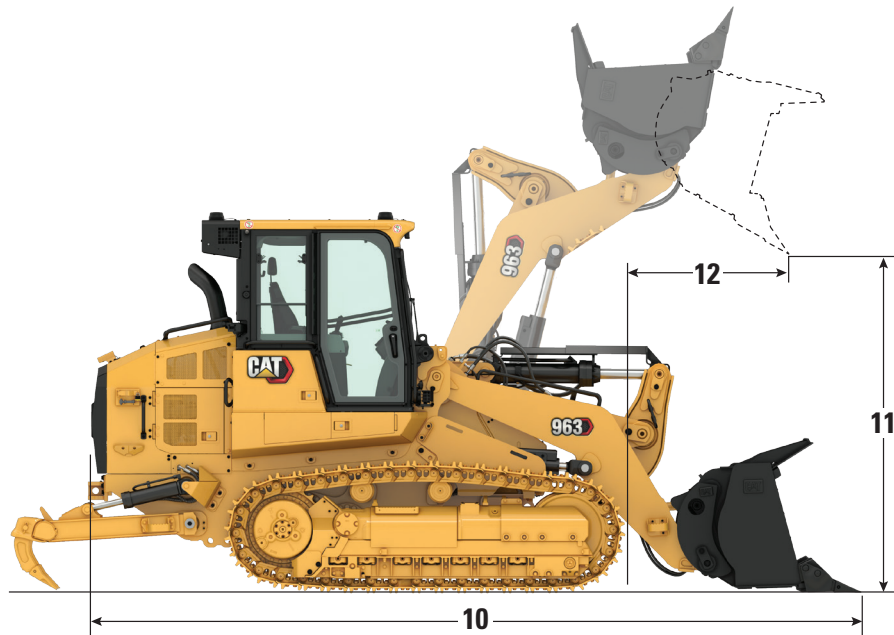
Flat Floor Buckets – Leveling, loose material handling

For maximum versatility, the Fusion™ coupler is compatible with a range of buckets, forks, rakes, material handling arm and more. Consult with your Cat dealer for compatibility.

Fusion™ Quick Coupler Buckets	Fusion Buckets			
	Long Teeth & Segments		Wide Long Teeth & Segments	
Cutting Edge Type				
Bucket Weight	1742 kg	3,840 lb	2036 kg	4,488 lb
Bucket Width	2571 mm	101.2 in	2998 mm	118.1 in
Rated Capacity at 100% Fill Factor <sup>1</sup>	2.3 m <sup>3</sup>	3.0 yd <sup>3</sup>	2.7 m <sup>3</sup>	3.5 yd <sup>3</sup>
Rated Operating Capacity <sup>2</sup>	4638 kg	10,463 lb	4632 kg	10,211 lb
Static Tipping Load <sup>3</sup>	13 250 kg	29,895 lb	13 233 kg	29,173 lb
<b>10</b> Overall Machine Length (bucket on the ground)	6956 mm	273.9 in	6956 mm	273.9 in
<b>11</b> Dump Clearance at Maximum Lift and 45° Discharge	3045 mm	119.9 in	3045 mm	119.9 in
<b>12</b> Reach at Maximum Lift and 45° Discharge	1193 mm	47 in	1193 mm	47 in
Breakout Force	180 114 N	40,191 lbf	178 201 N	40,061 lbf

<sup>1</sup>Volumetric bucket capacity as per ISO 7546:1983.  
<sup>2</sup>Rated Operating Capacity should be considered with 35% Static Tipping Load as required by ISO 14397-1:2007.  
<sup>3</sup>Machine equipped with standard and additional counterweights.

## Buckets



Pin-On Buckets	General Purpose Buckets*		Performance Bucket**	Flat Floor Buckets*		Multi-Purpose Bucket**
Cutting Edge Type	Long Teeth & Segments	Bolt-On Full Edge	Long Teeth & Segments	Welded Flush Adapters, Long Teeth	Wide – Welded Flush Adapters, Long Teeth	Long Teeth & Segments
Bucket Weight	1890 kg (4,167 lb)	1739 kg (3,834 lb)	1950 kg (4,299 lb)	1596 kg (3,519 lb)	1857 kg (4,094 lb)	2200 kg (4,850 lb)
Bucket Width	2571 mm (101.2 in)	2571 mm (101.2 in)	2671 mm (105.2 in)	2583 mm (101.6 in)	2998 mm (118.1 in)	2575 mm (101.3 in)
Rated Capacity at 100% Fill Factor <sup>1</sup>	2.5 m <sup>3</sup> (3.2 yd <sup>3</sup> )	2.5 m <sup>3</sup> (3.2 yd <sup>3</sup> )	2.8 m <sup>3</sup> (3.7 yd <sup>3</sup> )	2.3 m <sup>3</sup> (3.0 yd <sup>3</sup> )	2.7 m <sup>3</sup> (3.5 yd <sup>3</sup> )	2.0 m <sup>3</sup> (2.6 yd <sup>3</sup> )
Rated Capacity at 110% Fill Factor			3.1 m <sup>3</sup> (4.0 yd <sup>3</sup> )			
Rated Operating Capacity <sup>2</sup>	4731 kg (10,431 lb)	4808 kg (10,599 lb)	5015 kg (11,057 lb)	4853 kg (10,698 lb)	4761 kg (10,496 lb)	4612 kg (10,169 lb)
Static Tipping Load	13 518 kg (29,802 lb)	13 736 kg (30,283 lb)	14 329 kg (31,590 lb)	13 865 kg (30,566 lb)	13 603 kg (29,989 lb)	13 178 kg (29,053 lb)
<b>10</b> Overall Machine Length (bucket on the ground)	6831 mm (268.9 in)	6613 mm (260.3 in)	6925 mm (272.7 in)	6839 mm (269.2 in)	6839 mm (269.2 in)	6897 mm (271.5 in)
<b>11</b> Dump Clearance at Maximum Lift and 45° Discharge	3079 mm (121.2 in)	3080 mm (121.2 in)	2988 mm (117.7 in)	3145 mm (123.8 in)	3145 mm (123.8 in)	2926 mm (115.2 in)
<b>12</b> Reach at Maximum Lift and 45° Discharge	1231 mm (48.5 in)	1230 mm (48.4 in)	1281 mm (50.5 in)	1182 mm (46.5 in)	1182 mm (46.5 in)	1077 mm (42.4 in)
Breakout Force	181 064 N (40,705 lbf)	183 150 N (41,174 lbf)	163 503 N (36,757 lbf)	198 144 N (44,545 lbf)	197 064 N (44,302 lbf)	175 418 N (39,436 lbf)

\*Machine equipped with no counterweight.

\*\*Machine equipped with standard and additional counterweights.

<sup>1</sup>Volumetric bucket capacity as per ISO 7546:1983.

<sup>2</sup>Rated Operating Capacity should be considered with 35% Static Tipping Load as required by ISO 14397-1:2007.

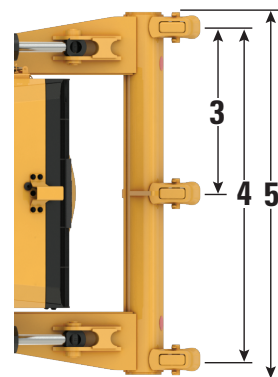
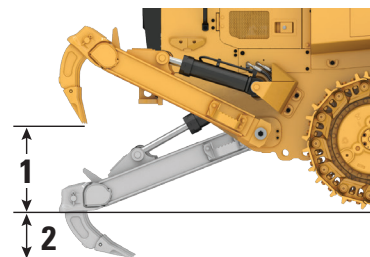
# 963 Track Loader Specifications

## Track

Track Shoe Width	Grousers	Features
<b>Heavy Duty Sealed and Lubricated</b>		
450 mm (18 in)	Double	—
450 mm (18 in)	Double	Center Hole
460 mm (18 in)	Single	Center Hole
550 mm (22 in)	Double	—
550 mm (22 in)	Double	Center Hole
560 mm (22 in)	Single	Extreme Service
7897 mm (31 in)	Double	Wide Gauge
<b>Cat Abrasion</b>		
450 mm (18 in)	Double	Narrow
550 mm (22 in)	Double	—

## Ripper

Type	Radial	
Weight	795 kg	1,753 lb
<b>1</b> Maximum Clearance Raised (shank tip)	873 mm	34.4 in
<b>2</b> Maximum Penetration	274 mm	10.8 in
<b>3</b> Pocket Spacing	896 mm	35.3 in
<b>4</b> Shank Gauge	1792 mm	70.6 in
<b>5</b> Overall Ripping Width	1955 mm	77.0 in
Beam Cross Section	203 mm × 165 mm	8.0 in × 6.5 in
Maximum Penetration Force	176 kN	39,646 lbf
Maximum Pry Out Force	85 kN	19,038 lbf



## Standards

### ROPS/FOPS

- ROPS (Rollover Protective Structure) offered by Caterpillar for the machine meets ROPS criteria ISO 3471:2008.
- FOPS (Falling Object Protective Structure) meets ISO 3449:2005 Level II.

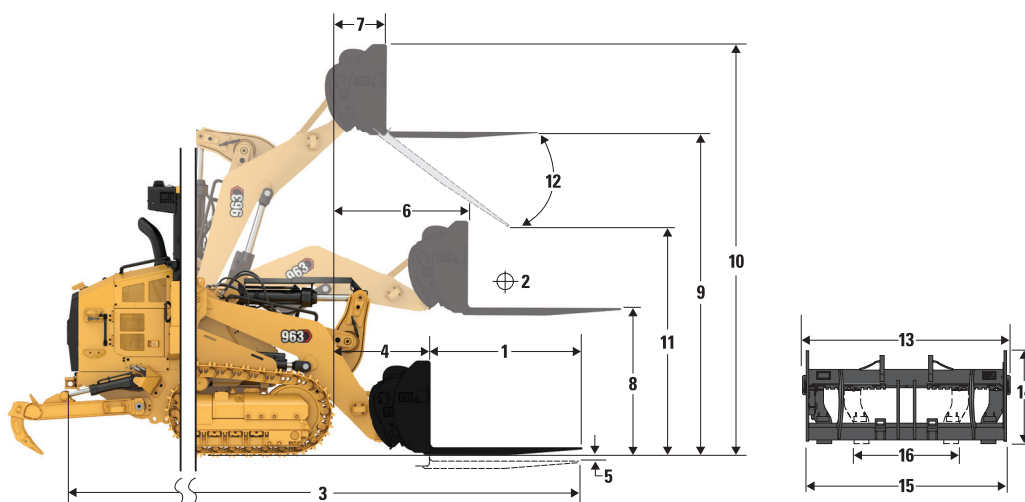
### Brakes

- Brakes meet the standard ISO 10265:2008.

### Sound and Vibration Information

- The declared dynamic operator sound pressure level is 74 dB(A) when “ISO 6396:2008” is used to measure the value for an enclosed cab. The measurements were conducted at 70% of the maximum engine cooling fan speed. The sound level may vary at different engine cooling fan speeds. The cab was properly installed and maintained. The measurements were conducted with the cab doors and the cab windows closed.  
NOTE: The dynamic operator sound pressure level uncertainty is  $\pm 2$  dB(A).
- Hearing protection may be needed when the machine is operated with an open operator station for extended periods, in a noisy environment or with a cab that is not properly maintained.
- The guaranteed exterior sound power level is 109 dB(A) when the value is measured according to the dynamic test procedures and the conditions that are specified in “ISO 6395:2008.” The measurements were conducted at 70% of the maximum engine cooling fan speed. The sound level may vary at different engine cooling fan speeds.
- Sound level information for machines in European Union countries and in countries that adopt the “EU Directives”: If equipped, the certification label is used to verify the environmental sound certification of the machine to the requirements of the European Union. The value that is listed on the label indicates the guaranteed exterior sound power level ( $L_{WA}$ ) at the time of manufacture for the conditions that are specified in “2000/14/EC.”

## Operating Specifications with Pallet Forks



963 Track Loader*	48-in Tines		60-in Tines		72-in Tines		84-in Tines		96-in Tines	
	mm	in	mm	in	mm	in	mm	in	mm	in
1 Tine Length	1219	48.0	1524	60.0	1829	72.0	2134	84.0	2438	96.0
2 Load Center	609	24.0	762	30.0	914	36.0	1067	42.0	1219	48.0
3 Maximum Overall Length	7186	282.9	7492	295.0	7796	306.9	8101	318.9	8406	330.9
4 Reach with Forks at Ground Level	1182	46.5	1182	46.5	1182	46.5	1182	46.5	1182	46.5
5 Dig Depth	-57	-2.2	-57	-2.2	-57	-2.2	-57	-2.2	-57	-2.2
6 Reach with Arms Horizontal and Fork Level	1709	67.3	1709	67.3	1709	67.3	1709	67.3	1709	67.3
7 Reach with Fork at Maximum Height	907	35.7	907	35.7	907	35.7	907	35.7	907	35.7
8 Ground to Top of Tine with Arms Horizontal and Fork Level	1772	69.7	1772	69.7	1772	69.7	1772	69.7	1772	69.7
9 Ground to Top of Tine at Maximum Height and Fork Level	3791	149.3	3791	149.3	3791	149.3	3791	149.3	3791	149.3
10 Overall Height of Fork at Full Lift (top of carriage to ground)	4831	190.2	4831	190.2	4831	190.2	4831	190.2	4831	190.2
11 Clearance at Full Lift and Maximum Dump	2505	98.6	2259	88.9	2014	79.3	1768	69.6	1523	59.9
12 Maximum Discharge Angle from Horizontal	-54°		-54°		-54°		-54°		-54°	
13 Overall Carriage Width	2528	99.5	2528	99.5	2528	99.5	2528	99.5	2528	99.5
14 Overall Carriage Height	1130	44.5	1130	44.5	1130	44.5	1130	44.5	1130	44.5
15 Outside Tine Width (maximum spread)	2178	85.7	2178	85.7	2178	85.7	2178	85.7	2178	85.7
16 Outside Tine Width (minimum spread)	576	22.7	576	22.7	576	22.7	576	22.7	576	22.7
Tine Width (single tine)	180	7.1	180	7.1	180	7.1	180	7.1	180	7.1
Tine Thickness	90.0	3.5	90.0	3.5	90.0	3.5	90.0	3.5	90.0	3.5
	kg	lb	kg	lb	kg	lb	kg	lb	kg	lb
Tine Load Capacity (Per Pair)	22 200	48,942.6	17 800	39,242.3	14 800	32,628.4	12 700	27,998.7	11 300	24,912.2
Static Tipping Load Arm Horizontal and Fork Level	9011	19,866.9	8501	18,740.5	8017	17,674.9	7573	16,695.4	7204	15,882.5
Static Lifting Capacity Arm Horizontal and Fork Level	11 748	25,899.7	11 627	25,632.4	10 867	23,958.5	9692	21,366.4	8738	19,264.0
Rated Load (SAE J1197) **	3154	6,953.4	2975	6,559.2	2806	6,186.2	2651	5,843.4	2521	5,558.9

\*Construction configuration with 450 mm (22 in) heavy duty tracks, standard counterweight (320 kg/705 lb) and additional counterweight (310 kg/683 lb).

\*\*For crawler loaders, 35% of the tipping load or 100% of the lifting capacity, whichever is less. (SAE J1197:2011, EN-474-3:2010, ISO 14397-1:2007).

# 963 Standard and Optional Equipment

## Standard and Optional Equipment

Standard and optional equipment may vary. Consult your Cat dealer for details.

	Standard	Optional		Standard	Optional
<b>POWER TRAIN</b>			<b>ELECTRICAL</b>		
Cat C7.1 diesel engine, turbocharged with Air-To-Air After Cooler (ATAAC)	✓		Ground Level Service Center	✓	
Engine-mounted aftertreatment to meet U.S. EPA Tier 4 Final, EU Stage V, Japan 2014, Korea Tier 4 Final emission standards	✓		24 volt heavy-duty alternator	✓	
Modular cooling system for engine air intake, oil and water	✓		Backup alarm	✓	
Hydraulic demand fan – electronically controlled, temperature sensing	✓		Two horns	✓	
Hydraulic fan, non-reversing		✓	Two heavy-duty batteries, high output, maintenance free, 1,120 CCA	✓	
Hydraulic fan, reversing		✓	Main disconnect switch	✓	
Electro Hydrostatic Control (EHC) for transmission	✓		Electric starter (heavy-duty, 24 volt)	✓	
Engine idle shutdown	✓		Extra lighting – two additional LED lights at the bottom of cab facing forward plus 1 underhood light		✓
Auto engine speed control	✓		LED flashing beacon		✓
Electric fuel pump	✓		<b>OPERATOR ENVIRONMENT</b>		
Water separator	✓		Pressurized, sound suppressed, ROPS/ FOPS Cab with tinted glass and right side sliding window	✓	
Glow plug starting aid	✓		Cab package with one sliding side window and four halogen lights: two facing forward, roof mounted, two facing rearward, integrated in the air conditioner unit		✓
Engine air cleaner		✓	Deluxe cab package with two sliding side windows and eight LED lights: four roof-mounted facing forward, two facing rearward and two facing side integrated in the air conditioner unit		✓
Engine air precleaner		✓	Deluxe high back seat – heated, with adjustable shock control		✓
<b>UNDERCARRIAGE</b>			Premium Plus high back seat – heated and cooled, lockable side-side isolator		✓
Heavy duty undercarriage and tracks (38 sections), 1850 mm (72.8 in) track gauge	✓		Adjustable armrests	✓	
Cat Abrasion undercarriage		✓	Electro-Hydraulic, seat mounted control levers with faster processing	✓	
Oscillating track roller frames	✓		V-pattern and pedal steering controls		✓
Track guiding guards, end section	✓		Joystick steering controls		✓
Hydraulic track adjuster	✓		Joystick implement control		✓
Sprocket rims with replaceable bolt-on tough steel segments	✓		Two-lever implement control		✓
Sprocket guards	✓		Seat belt, retractable, with buckling indicator on dash	✓	
Seven track rollers per side, with two upper carrier rollers, lifetime lubricated	✓		Four-point restraint ready seat	✓	
Idlers, conventional type, lifetime lubricated	✓		Air conditioning and heating	✓	
			Heater/defroster with automatic temperature control and automatic blower control	✓	
			Cab air powered precleaner		✓
			Rearview mirror, inside, adjustable	✓	

(continued on next page)



## Standard and Optional Equipment *(continued)*

Standard and optional equipment may vary. Consult your Cat dealer for details.

	Standard	Optional		Standard	Optional
<b>OPERATOR ENVIRONMENT <i>(continued)</i></b>			<b>FEATURE PACKAGES</b>		
Radio ready. Includes speakers, antenna and 12V power outlet and 5V USB port	✓		Construction Package with Heavy Duty undercarriage		✓
Radio – FM Ready Kit		✓	Construction Package with Cat Abrasion undercarriage		✓
Radio – Bluetooth® & Aux & Mic		✓	Low Ground Pressure (LGP) Arrangement		✓
Radio – Bluetooth & Aux & Mic – <b>Dab+</b>		✓	Heavy Duty Waste Package		✓
Radio – Bluetooth & Aux & Mic – <b>Sirius</b>		✓	Heavy Duty Extreme Service Waste Package		✓
Parking brake switch and “brake-on” indicator light	✓		Heavy Duty Enhanced Cleaning Waste Package		✓
Implement lock-out switch	✓		Ship Hold Package		✓
High Definition rearview camera	✓		Partial Steel Mill Package		✓
254 mm (10 in) color touchscreen display with integrated rear camera display and machine slope indicator	✓		<b>GUARDING</b>		
Three selectable working modes (Auto, Power, Eco)	✓		Full bottom guards	✓	
Operator programmable lift and tilt kickouts	✓		Idler guard (none)		✓
Machine Pitch and Roll indicate	✓		Idler guard		✓
Bucket shake	✓		Idler guard – ship hold		✓
Remote services (Troubleshoot/Remote Flash)		✓	Front light guard		✓
Heavy-duty rubber floor mat	✓		Windshield guard		✓
Windshield washers and wipers, multiple speed, front and rear	✓		Lift cylinder guard		✓
Durable metal roof	✓		Tilt cylinder guard		✓
Coat hook	✓		Two-piece final drive guard		✓
Storage compartments under left armrest	✓		Three-piece final drive guard		✓
Document holder on right console	✓		Final drive bottom guard		✓
<b>OTHER STANDARD EQUIPMENT</b>			Track roller guard		✓
Durable metal fender	✓				
Exterior sound suppression	✓				
Load sensing implement pump with variable displacement	✓				
Z-bar loader linkage	✓				
Implement cylinders with sensors	✓				
Engine enclosure with lockable doors	✓				
Debris resistant radiator core (six fins-per-inch)	✓				
Hinged radiator guard and swing out fan	✓				
4 × 2 easy tie-down points on chassis	✓				

*(continued on next page)*

# 963 Standard and Optional Equipment

## Standard and Optional Equipment (continued)

Standard and optional equipment may vary. Consult your Cat dealer for details.

	Standard	Optional		Standard	Optional
<b>BUCKETS*</b>			<b>MAINTENANCE</b>		
General purpose – 2.5 m <sup>3</sup> (3.25 yd <sup>3</sup> )		✓	Standard lubricant		✓
General purpose with welded flush adaptor – 2.3 m <sup>3</sup> (3.0 yd <sup>3</sup> )		✓	Bio lubricant		✓
Heavy-duty general purpose – 2.5 m <sup>3</sup> (3.25 yd <sup>3</sup> )		✓	Ecosafe lubricant (steel mill)		✓
Multi-purpose – 2.0 m <sup>3</sup> (2.6 yd <sup>3</sup> )		✓	Cat extended life coolant	✓	
Heavy-duty multi-purpose – 2.0 m <sup>3</sup> (2.6 yd <sup>3</sup> )		✓	Service package		✓
General purpose with full bolted cutting edge – 2.5 m <sup>3</sup> (3.25 yd <sup>3</sup> )		✓	Extended service package – manual hydraulic system enabling cab tilt and lock at 30 degrees safely in the field, shovel holder bracket (shovel not included)		✓
Performance general purpose – 2.8 m <sup>3</sup> (3.7 yd <sup>3</sup> )		✓	High speed oil change		✓
Wide flush general purpose – 2.9 m <sup>3</sup> (3.8 yd <sup>3</sup> )		✓	Ecology drains on hydraulic oil tank	✓	
Quick coupler, general purpose – 2.3 m <sup>3</sup> (3.0 yd <sup>3</sup> )		✓	Oil sampling valves	✓	
Quick coupler, general purpose LGP – 2.7 m <sup>3</sup> (3.5 yd <sup>3</sup> )		✓	Cat XT™ hoses	✓	
Heavy-duty landfill bucket – 3.1 m <sup>3</sup> (4.0 yd <sup>3</sup> )		✓	HYDO™ Advanced 10	✓	
Multi-purpose heavy-duty landfill bucket – 2.7 m <sup>3</sup> (3.5 yd <sup>3</sup> )		✓	Implement oil return filter in hydraulic tank	✓	
No bucket		✓	<b>REAR ATTACHMENTS</b>		
<b>HYDRAULICS</b>			Bumper		✓
Two-valve hydraulics, two-lever		✓	Ripper		✓
Two-valve hydraulics, joystick		✓	No bumper		✓
Three-valve hydraulics, front, joystick		✓	Ripper hitch		✓
Three-valve hydraulics, rear, joystick		✓	Striker bars		✓
Three-valve hydraulics, rear, two-lever		✓	<b>FUEL TANK</b>		
Four-valve hydraulics, front and rear, joystick		✓	Fuel tank	✓	
Standard hydraulic lines		✓	Fast Fill fuel tank		✓
Quick coupler hydraulic lines		✓	Fuel tank refilling pump		✓
			Sediment hand pump		✓
			<b>OTHER EQUIPMENT</b>		
			Access package		✓
			Jacket water heater (110 V) and ether starting aid		✓
			Jacket water heater (240 V) and ether starting aid		✓
			Fusion Quick Coupler		✓
			<b>TECHNOLOGY PRODUCTS</b>		
			Product Link™ Ready	✓	
			Product Link – Satellite		✓
			Product Link – Dual Satellite and Cellular		✓
			No Product Link		✓
			Grade Control mast		✓
			<b>COUNTERWEIGHTS</b>		
			Light counterweight 320 kg (705 lb)		✓
			Light counterweight, additional 310 kg (683 lb)		✓

\*Bucket and attachment offerings may vary. Please consult your Cat dealer for availability.





# 963

## Track Loader Waste Handler/Demolition

***A Waste Handler can take on a variety of tasks in a landfill or transfer station. Use it for pushing, shredding and pre-compacting waste. For added versatility, track loaders are also ideal for creating and maintaining access, digging cells and digging/carrying/spreading cover material.***

### Top Performer

- 963 uses up to 10% less fuel per hour than the previous model.
- Smoother implement and steering response, and improved steering performance provide more controllability.
- Updated cab offers more comfort and an intuitive 10-inch (254 mm) touchscreen dash display.
- Standard High Definition rearview camera shows prominently in the main display.
- Excellent visibility to the bucket and all around the machine enhances safety and helps operators work more confidently.

### Heavy Duty Waste Handler

- Specialized guarding, and seals help protect the machine and components from impact and airborne debris.
- Final Drive guarding helps prevent wrapping and damage.
- High debris cooling system with reversing demand fan – radiator fan folds out for easy cleanout access.
- Specialized air handling features help deliver cleaner air to the machine.
- Choice of buckets and track shoes allow you to further optimize the machine for greater performance and service life.

### Heavy Duty Enhanced Cleaning Waste Handler

- Helps reduce your clean-out time while adding ground pressure for more compaction.
- Wide gauge undercarriage equipped with a standard track width allows more space for debris to pass between the track roller frame, tracks and chassis.
- With less debris build-up, you spend less time cleaning.
- Helps reduce damage caused by debris carried on the tracks.
- Heavier waste configuration combined with narrower track shoes increases ground pressure for greater compaction.

### Extreme Service Waste Handler or Demolition

- A tough, compact solution, ideal for transfer stations or demolition job sites.
- Added guarding, beyond the Heavy Duty package, on lift and tilt cylinders.
- Screen helps protect windshield and operator from breakage and debris.
- Heavy duty bumper and hitch.
- Striker bars.
- Powered cab air precleaner.

# 963 Track Loader – Waste Handler/Demolition Specifications

## Engine

Engine Model	Cat C7.1	
Emissions	U.S. EPA Tier 4 Final/ EU Stage V/Japan 2014/ Korea Tier 4 Final	
Build Number	12A	
Net Power – ISO 9249:2007/ SAE J1349:2011	151 kW	202 hp
Net Power – ISO 9249:2007/ SAE J1349:2011 (DIN)	204 mhp	
Gross Power SAE J1995:2014	170 kW	228 hp
Engine Power ISO 14396:2002	168 kW	225 hp
Engine Power ISO 14396:2002 (DIN)	227 mhp	
Bore	105 mm	4.1 in
Stroke	135 mm	5.3 in
Displacement	7.01 L	427.8 in <sup>3</sup>

- Engine power at 1,800 rpm.
- Inline six-cylinder diesel engine with twin turbos, charged with ATAAC and engine mounted aftertreatment.
- No derating required up to 3000 m (9,842 ft) altitude.
- The net power advertised is the power available at the flywheel when the engine is equipped with fan running up to maximum speed, alternator, air cleaner and aftertreatment.
- All non-road Tier 4 Interim and Final, Stage IIIB, IV and V, Japan 2014 (Tier 4 Final) and Korea Tier 4 Final diesel engines are required to use only Ultra Low Sulfur Diesel (ULSD) fuels containing 15 ppm EPA/10 ppm EU (mg/kg) sulfur or less. Biodiesel blends up to B20 (20% blend by volume) are acceptable when blended with 15 ppm (mg/kg) sulfur or less ULSD. B20 should meet ASTM D7467 specification (biodiesel blend stock should meet Cat biodiesel spec, ASTM D6751 or EN 14214). Cat DEO-ULS™ or oils that meet the Cat ECF-3, API CJ-4, and ACEA E9 specification are required. Consult your OMM for further machine specific fuel recommendations.
- Diesel Exhaust Fluid (DEF) used in Cat Selective Catalytic Reduction (SCR) systems must meet the requirements outlined in the International Organization for Standardization (ISO) standard 22241.

## Air Conditioning

The air conditioning system on this machine contains the fluorinated greenhouse gas refrigerant R134a (Global Warming Potential = 1430). The system contains 1.1 kg of refrigerant which has a CO<sub>2</sub> equivalent of 1.573 metric tons.

## Drive System

Description	Electronically controlled Hydrostatic drive with two variable displacement bent axis motors and two variable displacement slipper-type axial piston pumps
Travel Speed	Infinite variable speed from 0 to 10 km/h (0 to 6.2 mph)
Relief Valve Setting	47 500 kPa    6,890 psi

## Implement System

Description	Load sensing, variable displacement piston pump
Maximum Continuous Flow	256 L/min    56.3 gal/min at 1,800 rpm    at 1,800 rpm
Maximum Pressure	28 000 kPa    4,061 psi
Filter System	Implement return filter

## Service Refill Capacities

Fuel Tank	320 L	84.5 gal
DEF Tank	16 L	4.2 gal
Cooling System	32 L	8.5 gal
Crankcase (with filter)	16.5 L	4.4 gal
Final Drive (each)	15 L	4.0 gal
Hydraulic Tank	90 L	23.7 gal
Pivot Shaft	1.8 L	0.5 gal

# 963 Track Loader – Waste Handler/Demolition Specifications

## Standards

### ROPS/FOPS

- ROPS (Rollover Protective Structure) offered by Caterpillar for the machine meets ROPS criteria ISO 3471:2008.
- FOPS (Falling Object Protective Structure) meets ISO 3449:2005 Level II.

### Brakes

- Brakes meet the standard ISO 10265:2008.

### Sound and Vibration Information

- The declared dynamic operator sound pressure level is 74 dB(A) when “ISO 6396:2008” is used to measure the value for an enclosed cab. The measurements were conducted at 70% of the maximum engine cooling fan speed. The sound level may vary at different engine cooling fan speeds. The cab was properly installed and maintained. The measurements were conducted with the cab doors and the cab windows closed.

NOTE: The dynamic operator sound pressure level uncertainty is  $\pm 2$  dB(A).

- Hearing protection may be needed when the machine is operated with an open operator station for extended periods, in a noisy environment or with a cab that is not properly maintained.
- The guaranteed exterior sound power level is 109 dB(A) when the value is measured according to the dynamic test procedures and the conditions that are specified in “ISO 6395:2008.” The measurements were conducted at 70% of the maximum engine cooling fan speed. The sound level may vary at different engine cooling fan speeds.
- Sound level information for machines in European Union countries and in countries that adopt the “EU Directives”: If equipped, the certification label is used to verify the environmental sound certification of the machine to the requirements of the European Union. The value that is listed on the label indicates the guaranteed exterior sound power level ( $L_{WA}$ ) at the time of manufacture for the conditions that are specified in “2000/14/EC.”

## Heavy Duty Waste Handler

Operating Weight <sup>1</sup>	20 661 kg	45,549 lb
Shipping Weight	18 771 kg	41,383 lb
Track Shoe Width – Standard <sup>2</sup>	550 mm	22.0 in
Track Shoe Width – Narrow <sup>2</sup>	450 mm	18.0 in
Track Rollers – Each Side	7	
Number of Shoes – Each Side	38	
Track on Ground	2542 mm	100.0 in
Ground Pressure – Standard Shoes	63.9 kPa	9.3 psi
Ground Pressure – Narrow Shoes	78.1 kPa	11.3 psi

## Heavy Duty Enhanced Cleaning Waste Handler

Operating Weight <sup>1</sup>	21 374 kg	47,122 lb
Shipping Weight	19 484 kg	42,955 lb
Track Shoe Width – Standard <sup>2</sup>	550 mm	22.0 in
Track Shoe Width – Narrow <sup>2</sup>	450 mm	22.0 in
Track Rollers – Each Side	7	
Number of Shoes – Each Side	38	
Track on Ground	2542 mm	100.0 in
Ground Pressure – Standard Shoes	66.1 kPa	9.6 psi
Ground Pressure – Narrow Shoes	80.8 kPa	11.7 psi

## Extreme Service Waste Handler or Demolition

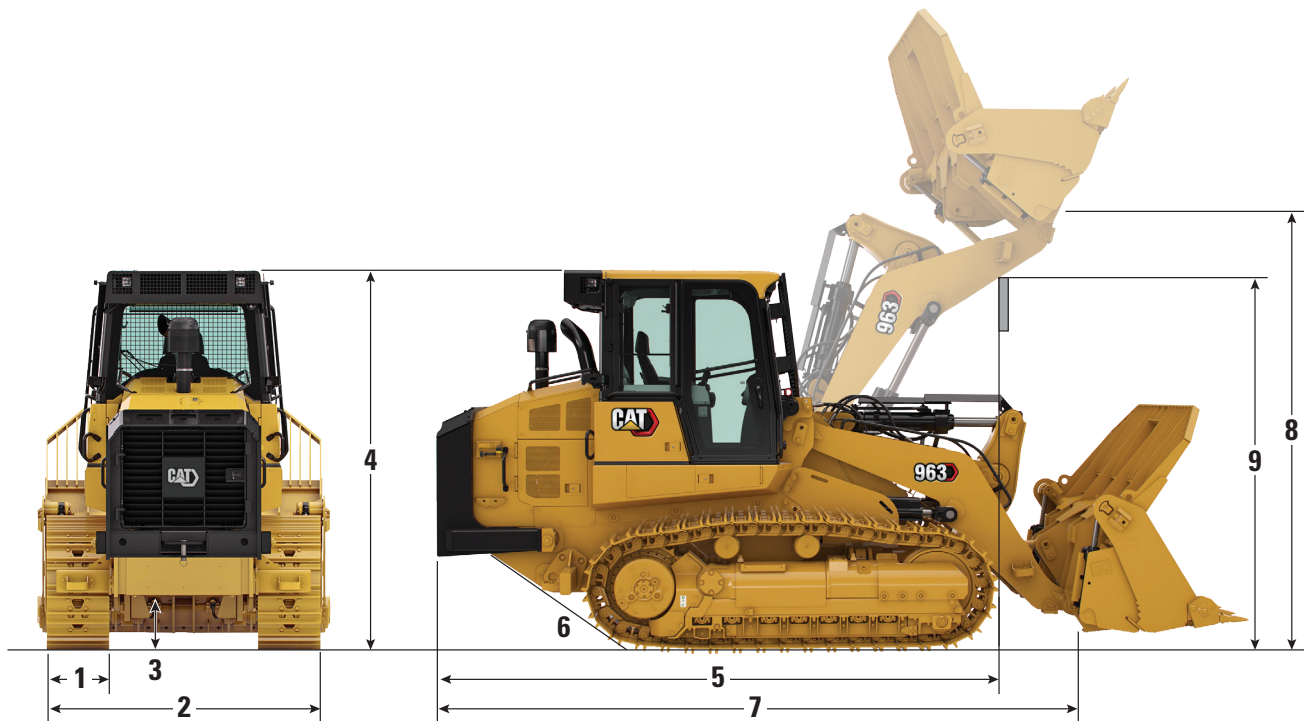
Operating Weight <sup>1</sup>	21 366 kg	47,104 lb
Shipping Weight	19 476 kg	42,937 lb
Track Shoe Width – Standard <sup>2</sup>	550 mm	22.0 in
Track Shoe Width – Narrow <sup>2</sup>	450 mm	22.0 in
Track Rollers – Each Side	7	
Number of Shoes – Each Side	38	
Track on Ground	2542 mm	100.0 in
Ground Pressure – Standard Shoes	66.1 kPa	9.6 psi
Ground Pressure – Narrow Shoes	80.8 kPa	11.7 psi

<sup>1</sup>Operating weight: machine with construction package, general purpose landfill bucket with teeth and segments, lubricants, 100% fuel tank and 75 kg (165 lb) operator

<sup>2</sup>Single or double grouser, with or without center holes

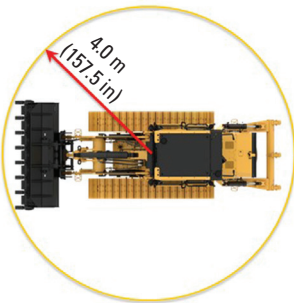
# 963 Track Loader – Waste Handler/Demolition Specifications

## Dimensions



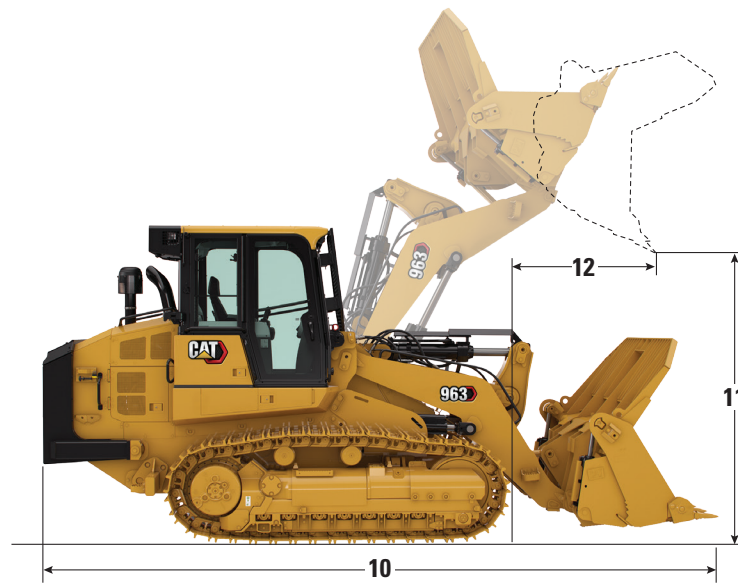
	Heavy Duty		Heavy Duty Enhanced Cleaning		Extreme Service/ Demolition	
1 Standard Track Shoe Width	550 mm	22.0 in	550 mm	22.0 in	550 mm	22.0 in
2 Overall Machine Width (without bucket)						
Minimum: Standard Gauge (450 mm/17.7 in shoes)	2300 mm	90.5 in	2550 mm	100.4 in	2300 mm	90.5 in
Maximum: Wide Gauge (550 mm/21.7 in shoes)	2400 mm	94.5 in	2650 mm	104.3 in	2400 mm	94.5 in
3 Ground Clearance	471 mm	18.5 in	471 mm	18.5 in	471 mm	18.5 in
4 Machine Height to Top of Cab	3325 mm	130.9 in	3325 mm	130.9 in	3325 mm	130.9 in
5 Machine Length to Front of Tracks	4943 mm	194.6 in	4943 mm	194.6 in	5009 mm	197.2 in
with Ripper, Add	586 mm	23.0 in	586 mm	23 in		
6 Ramp Angle	29°		29°		29°	
7 Overall Length (without bucket)	5841 mm	230 in	5841 mm	230 in	5907 mm	232.6 in
8 Hinge Pin Height at Maximum Lift	3940 mm	155.1 in	3940 mm	155.1 in	3940 mm	155.1 in
9 Lift Arm Clearance at Maximum Lift	3590 mm	141.3 in	3590 mm	141.3 in	3590 mm	141.3 in
Turning Radius	4.0 m	157.5 in	4.1 m	160.0 in	4.0 m	157.5 in

Bucket and attachment offerings may vary. Please consult your Cat dealer for availability.



# 963 Track Loader – Waste Handler/Demolition Specifications

## Buckets



Pin-On Buckets	General Purpose Bucket*		Landfill Bucket**	Performance Bucket**	Flat Floor Bucket*		Multi-Purpose Bucket**	Multi-Purpose Bucket** Landfill
	Long Teeth & Segments	Bolt-On Full Edge	Long Teeth & Segments	Long Teeth & Segments	Welded Flush Adapters, Long Teeth	Wide – Welded Flush Adapters, Long Teeth	Long Teeth & Segments	Long Teeth & Segments
Bucket Weight	1890 kg (4,167 lb)	1739 kg (3,834 lb)	2039 kg (4,491 lb)	1950 kg (4,299 lb)	1596 kg (3,519 lb)	1857 kg (4,094 lb)	2200 kg (4,850 lb)	2458 kg (5,419 lb)
Bucket Width	2571 mm (101.2 in)	2571 mm (101.2 in)	2571 mm (101.2 in)	2671 mm (105.2 in)	2583 mm (101.6 in)	2998 mm (118.1 in)	2575 mm (101.3 in)	2575 mm (101.3 in)
Rated Capacity at 100% Fill Factor <sup>1</sup>	2.5 m <sup>3</sup> (3.2 yd <sup>3</sup> )	2.5 m <sup>3</sup> (3.2 yd <sup>3</sup> )	3.1 m <sup>3</sup> (4.1 yd <sup>3</sup> )	2.8 m <sup>3</sup> (3.7 yd <sup>3</sup> )	2.3 m <sup>3</sup> (3.0 yd <sup>3</sup> )	2.7 m <sup>3</sup> (3.5 yd <sup>3</sup> )	2.0 m <sup>3</sup> (2.6 yd <sup>3</sup> )	2.7 m <sup>3</sup> (3.5 yd <sup>3</sup> )
Rated Capacity at 110% Fill Factor				3.1 m <sup>3</sup> (4.0 yd <sup>3</sup> )				
Rated Operating Capacity <sup>2</sup>	4731 kg (10,431 lb)	4808 kg (10,599 lb)	4682 kg (10,322 lb)	5030 kg (11,090 lb)	4853 kg (10,698 lb)	4761 kg (10,496 lb)	4612 kg (10,168 lb)	4603 kg (10,147 lb)
Static Tipping Load	13 518 kg (29,802 lb)	13 736 kg (30,283 lb)	13 377 kg (29,491 lb)	14 372 kg (31,684 lb)	13 865 kg (30,567 lb)	13 603 kg (29,989 lb)	13 178 kg (29,053 lb)	13 150 kg (28,992 lb)
<b>10</b> Overall Machine Length (bucket on the ground)	6831 mm (268.9 in)	6831 mm (268.9 in)	6831 mm (268.9 in)	6925 mm (272.7 in)	6839 mm (269.2 in)	6839 mm (269.2 in)	6897 mm (271.5 in)	6897 mm (271.5 in)
<b>11</b> Dump Clearance at Maximum Lift and 45° Discharge	3079 mm (121.2 in)	3079 mm (121.2 in)	3076 mm (121.1 in)	2988 mm (117.7 in)	3145 mm (123.8 in)	3145 mm (123.8 in)	2926 mm (115.2 in)	2936 mm (115.2 in)
<b>12</b> Reach at Maximum Lift and 45° Discharge	1231 mm (48.5 in)	1231 mm (48.5 in)	1227 mm (48.3 in)	1281 mm (50.5 in)	1182 mm (46.5 in)	1182 mm (46.5 in)	1077 mm (42.4 in)	1077 mm (42.4 in)
Breakout Force	181 064 N (40,705 lbf)	183 150 N (41,174 lbf)	179 166 N (40,278 lbf)	163 503 N (36,757 lbf)	198 144 N (30,566 lbf)	197 064 N (44,302 lbf)	175 418 N (39,436 lbf)	173 902 N (39,095 lbf)

Note: General construction buckets are compatible with the Waste Handler configuration. Additional buckets and work tool attachments are available. Please consult your Cat dealer for details.

\*Machine equipped with no counterweight.

\*\*Machine equipped with standard and additional counterweights.

<sup>1</sup>Volumetric bucket capacity as per ISO 7546:1983.

<sup>2</sup>Rated Operating Capacity should be considered with 35% Static Tipping Load as required by ISO 14397-1:2007.

# 963 Track Loader – Waste Handler/Demolition Specifications

## Track

Track Shoe Width	Grousers	Features
<b>Heavy Duty Sealed and Lubricated</b>		
450 mm (18 in)	Double	
450 mm (18 in)	Double	Center Hole
460 mm (18 in)	Single	Center Hole
550 mm (22 in)	Double	
550 mm (22 in)	Double	Center Hole
560 mm (22 in)	Single	Extreme Service, Center Hole
800 mm (31 in)	Double	Wide Gauge

### Grouser Selection

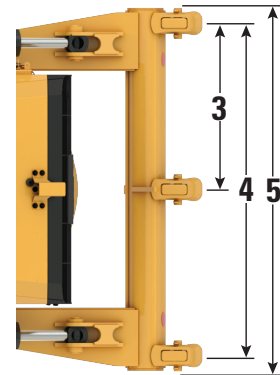
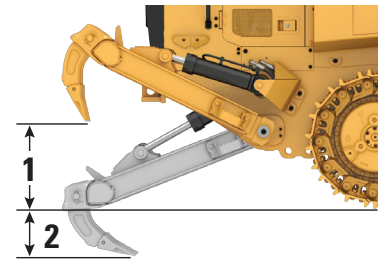
Single Grouser – maximizes shredding effect

Double Grouser – best balance of traction and maneuverability

Center Holes – Helps reject material, helping to reduce build-up and added track tension.

## Ripper

Type	Radial	
Weight	795 kg	1,753 lb
<b>1</b> Maximum Clearance Raised (shank tip)	873 mm	34.4 in
<b>2</b> Maximum Penetration	274 mm	10.8 in
<b>3</b> Pocket Spacing	896 mm	35.3 in
<b>4</b> Shank Gauge	1792 mm	70.6 in
<b>5</b> Overall Ripping Width	1955 mm	77.0 in
Beam Cross Section	203 mm × 165 mm	8.0 in × 6.5 in
Maximum Penetration Force	176 kN	39,646 lbf
Maximum Pry Out Force	85 kN	19,038 lbf





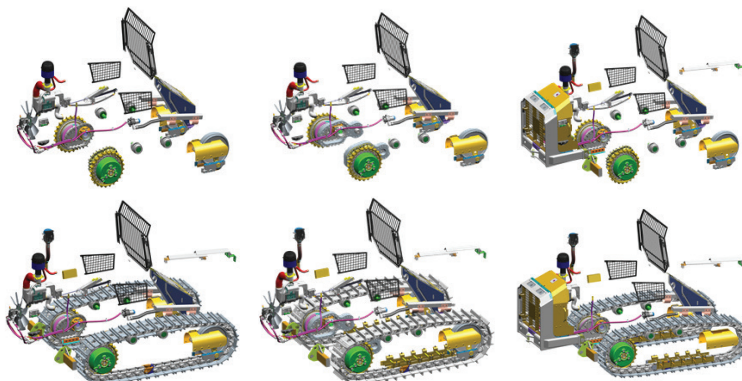
# 963 Track Loader – Waste Handler/Demolition Specifications

## Waste Handler Features

✓ Included

★ Recommended

● Compatible



Feature	Heavy Duty	Heavy Duty Enhanced Cleaning	Extreme Service/Demolition
Windshield Protection	✓	✓	✓
Idler Guard	✓	✓	✓
Lift Cylinder Guard	✓	✓	✓
Tilt Cylinder Guard	★	★	✓
Final Drive Duo Cone Seal Guard to protect against wire wrapping	✓	✓	✓
Final Drive Bottom Guard	★	★	
Final Drive Top and Bottom Guard	★	★	✓
Full Length Guard	●	★	★
Striker Bars	●	★	✓
Programmable Reversing Fan (Frequency and Duration) with fixed blade pitch and reversed rotation	✓	✓	✓
Dual-Stage Engine Air Pre-Cleaner with Turbine	✓	✓	✓
Cab Air Precleaner With Powered Turbine to eject debris	★	★	✓
450 mm (18 in) or 550 mm (22 in) Heavy Duty Tracks with Center Holes	★	★	★
Ripper	●	●	
Light Counterweight	●	●	
Additional Counterweight	●	●	
Latches on Rear Guard	✓	✓	✓
Heavy-duty Bumper			✓
Quick Coupler Lines	●	●	●
Additional Lights – two additional LED lights at bottom of cab, underhood light	●	●	●

# 963 Waste Handler/Demolition Standard and Optional Equipment

## Standard and Optional Equipment

Standard and optional equipment may vary. Consult your Cat dealer for details.

	Standard	Optional		Standard	Optional
<b>POWER TRAIN</b>			<b>ELECTRICAL</b>		
Cat C7.1 diesel engine, turbocharged with Air-To-Air After Cooler (ATAAC)	✓		Ground Level Service Center	✓	
Engine-mounted aftertreatment to meet U.S. EPA Tier 4 Final, EU Stage V, Japan 2014, Korea Tier 4 Final emission standards	✓		24 volt heavy-duty alternator	✓	
Modular cooling system for engine air intake, oil and water	✓		Backup alarm	✓	
Hydraulic demand fan – electronically controlled, temperature sensing	✓		Two horns	✓	
Hydraulic fan, reversing	✓		Two heavy-duty batteries, high output, maintenance free, 1,120 CCA	✓	
Electro Hydrostatic Control (EHC) for transmission	✓		Main disconnect switch	✓	
Engine idle shutdown	✓		Electric starter (heavy-duty, 24 volt)	✓	
Auto engine speed control	✓		Extra lighting. Two additional LED lights at the bottom of cab facing forward plus one underhood light		✓
Electric fuel pump	✓		LED flashing beacon		✓
Water separator	✓		<b>OPERATOR ENVIRONMENT</b>		
Glow plug starting aid	✓		Pressurized, sound suppressed, ROPS/FOPS Cab with tinted glass and right side sliding window	✓	
Engine air cleaner		✓	Cab package with one sliding side window and four halogen lights: two facing forward, roof mounted, two facing rearward, integrated in the air conditioner unit		✓
Engine air precleaner		✓	Deluxe cab package with two sliding side windows and eight LED lights: four roof-mounted facing forward, two facing rearward and two facing side integrated in the air conditioner unit		✓
<b>UNDERCARRIAGE</b>			Deluxe high back seat – heated, with adjustable shock control		✓
Heavy duty undercarriage and tracks (38 sections), 1850 mm (72.8 in) track gauge	✓		Premium Plus high back seat – heated and cooled, lockable side-side isolator		✓
Oscillating track roller frames	✓		Adjustable armrests	✓	
Track guiding guards, end section	✓		Electro Hydraulic, seat mounted control levers with faster processing	✓	
Hydraulic track adjuster	✓		V-pattern and pedal steering controls		✓
Sprocket rims with replaceable bolt-on tough steel segments	✓		Joystick steering controls		✓
Sprocket guards	✓		Joystick implement control		✓
Seven track rollers per side, with two upper carrier rollers, lifetime lubricated	✓		Two-lever implement control		✓
Idlers, conventional type, lifetime lubricated	✓		Seat belt, retractable, with buckling indicator on dash	✓	
			Four-point restraint ready seat	✓	
			Air conditioning and heating	✓	
			Heater/defroster with automatic temperature control and automatic blower control	✓	
			Cab air powered precleaner		✓
			Rearview mirror, inside, adjustable	✓	

(continued on next page)



# 963 Waste Handler/Demolition Standard and Optional Equipment

## Standard and Optional Equipment *(continued)*

Standard and optional equipment may vary. Consult your Cat dealer for details.

	Standard	Optional		Standard	Optional
<b>OPERATOR ENVIRONMENT <i>(continued)</i></b>			<b>OTHER STANDARD EQUIPMENT</b>		
Radio ready. Includes speakers, antenna and 12V power outlet and 5V USB port	✓		Durable metal fender	✓	
Radio – FM Ready Kit		✓	Exterior sound suppression	✓	
Radio – Bluetooth & Aux & Mic		✓	Load sensing implement pump with variable displacement	✓	
Radio – Bluetooth & Aux & Mic – <b>Dab+</b>		✓	Z-bar loader linkage	✓	
Radio – Bluetooth & Aux & Mic – <b>Sirius</b>		✓	Implement cylinders with sensors	✓	
Parking brake switch and “brake-on” indicator light	✓		Engine enclosure with lockable doors	✓	
Implement lock-out switch	✓		Debris resistant radiator core (six fins-per-inch)	✓	
High Definition rearview camera	✓		Hinged radiator guard with latch and swing out fan	✓	
254 mm (10 in) color touchscreen display with integrated rear camera display and machine slope indicator	✓		4 × 2 easy tie-down points on chassis	✓	
Three selectable working modes (Auto, Power, Eco)	✓		<b>FEATURE PACKAGES</b>		
Operator programmable lift and tilt kickouts	✓		Heavy Duty Waste Package		✓
Machine Pitch and Roll indicate	✓		Heavy Duty Extreme Service Waste Package		✓
Bucket shake	✓		Heavy Duty Enhance Cleaning Waste Package		✓
Remote services (Troubleshoot/Remote Flash)		✓	<b>GUARDING</b>		
Heavy-duty rubber floor mat	✓		Full bottom guards	✓	
Windshield washers and wipers, multiple speed, front and rear	✓		Idler guard (none)		✓
Durable metal roof	✓		Idler guard		✓
Coat hook	✓		Idler guard – ship hold		✓
Storage compartments under left armrest	✓		Front light guard		✓
Document holder on right console	✓		Windshield guard		✓
			Lift cylinder guard		✓
			Tilt cylinder guard		✓
			Final drive duo cone seal guard	✓	
			Two-piece final drive guard		✓
			Three-piece final drive guard		✓
			Final drive bottom guard		✓
			Track roller guard		✓

*(continued on next page)*

# 963 Waste Handler/Demolition Standard and Optional Equipment

## Standard and Optional Equipment *(continued)*

Standard and optional equipment may vary. Consult your Cat dealer for details.

	Standard	Optional		Standard	Optional
<b>BUCKETS*</b>			<b>MAINTENANCE</b>		
Heavy-duty landfill bucket – 3.1 m <sup>3</sup> (4.0 yd <sup>3</sup> )		✓	Standard lubricant		✓
Multi-purpose heavy-duty landfill bucket – 2.7 m <sup>3</sup> (3.5 yd <sup>3</sup> )		✓	Bio lubricant		✓
General purpose – 2.5 m <sup>3</sup> (3.25 yd <sup>3</sup> )		✓	Cat extended life coolant	✓	
General purpose with welded flush adaptor – 2.3 m <sup>3</sup> (3.0 yd <sup>3</sup> )		✓	Service package		✓
Heavy-duty general purpose – 2.5 m <sup>3</sup> (3.25 yd <sup>3</sup> )		✓	Extended service package – manual hydraulic system enabling cab tilt and lock at 30 degrees safely in the field, shovel holder bracket (shovel not included)		✓
Multi-purpose – 2.0 m <sup>3</sup> (2.6 yd <sup>3</sup> )		✓	High speed oil change		✓
Heavy-duty multi-purpose – 2.0 m <sup>3</sup> (2.6 yd <sup>3</sup> )		✓	Ecology drains on hydraulic oil tank	✓	
General purpose with full bolted cutting edge – 2.5 m <sup>3</sup> (3.25 yd <sup>3</sup> )		✓	Oil sampling valves	✓	
Performance general purpose – 2.8 m <sup>3</sup> (3.7 yd <sup>3</sup> )		✓	Cat XT hoses	✓	
Wide flush general purpose – 2.9 m <sup>3</sup> (3.8 yd <sup>3</sup> )		✓	HYDO Advanced 10	✓	
Quick coupler, general purpose – 2.3 m <sup>3</sup> (3.0 yd <sup>3</sup> )		✓	Implement oil return filter in hydraulic tank	✓	
Quick coupler, general purpose LGP – 2.7 m <sup>3</sup> (3.5 yd <sup>3</sup> )		✓	<b>REAR ATTACHMENTS</b>		
No bucket		✓	Bumper		✓
<b>HYDRAULICS</b>			Ripper		✓
Two-valve hydraulics, two-lever		✓	No bumper		✓
Two-valve hydraulics, joystick		✓	Ripper hitch		✓
Three-valve hydraulics, front, joystick		✓	Striker bars		✓
Three-valve hydraulics, rear, joystick		✓	<b>FUEL TANK</b>		
Three-valve hydraulics, rear, two-lever		✓	Fuel tank	✓	
Four-valve hydraulics, front and rear, joystick		✓	Fast Fill fuel tank		✓
Standard hydraulic lines		✓	Fuel tank refilling pump		✓
Quick coupler hydraulic lines		✓	Sediment hand pump		✓
			<b>OTHER EQUIPMENT</b>		
			Access package		✓
			Jacket water heater (110 V)		✓
			Jacket water heater (240 V)		✓
			Fusion Quick Coupler		✓
			<b>TECHNOLOGY PRODUCTS</b>		
			Product Link Ready	✓	
			Product Link – Satellite		✓
			Product Link – Dual Satellite and Cellular		✓
			No Product Link		✓
			Grade control mast		✓
			<b>COUNTERWEIGHTS</b>		
			Light counterweight 320 kg (705 lb)		✓
			Light counterweight, additional 310 kg (683 lb)		✓

\*Bucket and attachment offerings may vary. Please consult your Cat dealer for availability.



# 963

## Track Loader Ship Hold

***Traction, balance and agility are among the key characteristics that make track loaders ideal for ship hold work. Add in speed, reach, visibility and capability to use a variety of attachments, and track loaders become the top choice for unloading bulk carriers.***

### Track Loader Advantages

- Machine balance
- Maneuverability, especially in tight spaces
- Smooth, responsive controls
- Ability to work on slopes
- Undercarriage provides excellent traction and smooth ride over rough, loose or uneven surfaces
- Low ground pressure
- Excellent visibility, now with rear vision camera
- Quiet, sound suppressed cab
- Adjustable, air suspension seat for operator comfort
- Ease of maintenance and cooling system cleanout
- High reach for scraping down walls or loading
- Attachment versatility

Please consult with your Cat dealer regarding Ship Hold package availability.

### Ship Hold Features

- A set of durable lifting eyes designed and validated with ISO 15818:2017 provide fast and safe loading into the hold.
- Widely spaced lifting eyes provide stability during the lift.
- Steps for easy access to the cab from the front and the rear
- stability during the lift.
- Guarding helps protect the tilt cylinder rod from debris and impact.
- Thicker hydraulic tank guards.
- Optional center hole shoes reduce track packing and track chain tightening which extends undercarriage life.

### Attachment Versatility

- Trim blade or two-way dozer
- General purpose buckets
- Multi-purpose buckets
- Fusion™ Quick Coupler option lets you make fast attachment changes with a wide range of tools like forks, buckets, etc. from wheel loaders and other Fusion compatible machines.

# 963 Track Loader – Ship Hold Specifications

## Engine

Engine Model	Cat C7.1	
Emissions	U.S. EPA Tier 4 Final/ EU Stage V/Japan 2014/ Korea Tier 4 Final	
Build Number	12A	
Net Power – ISO 9249:2007/ SAE J1349:2011	151 kW	202 hp
Net Power – ISO 9249:2007/ SAE J1349:2011 (DIN)	204 mhp	
Gross Power SAE J1995:2014	170 kW	228 hp
Engine Power ISO 14396:2002	168 kW	225 hp
Engine Power ISO 14396:2002 (DIN)	227 mhp	
Bore	105 mm	4.1 in
Stroke	135 mm	5.3 in
Displacement	7.01 L	427.8 in <sup>3</sup>

- Engine power at 1,800 rpm.
- Inline six-cylinder diesel engine with twin turbos, charged with ATAAC and engine mounted aftertreatment.
- No derating required up to 3000 m (9,842 ft) altitude.
- The net power advertised is the power available at the flywheel when the engine is equipped with fan running up to maximum speed, alternator, air cleaner and aftertreatment.
- All non-road Tier 4 Interim and Final, Stage IIIB, IV and V, Japan 2014 (Tier 4 Final) and Korea Tier 4 Final diesel engines are required to use only Ultra Low Sulfur Diesel (ULSD) fuels containing 15 ppm EPA/10 ppm EU (mg/kg) sulfur or less. Biodiesel blends up to B20 (20% blend by volume) are acceptable when blended with 15 ppm (mg/kg) sulfur or less ULSD. B20 should meet ASTM D7467 specification (biodiesel blend stock should meet Cat biodiesel spec, ASTM D6751 or EN 14214). Cat DEO-ULS™ or oils that meet the Cat ECF-3, API CJ-4, and ACEA E9 specification are required. Consult your OMM for further machine specific fuel recommendations.
- Diesel Exhaust Fluid (DEF) used in Cat Selective Catalytic Reduction (SCR) systems must meet the requirements outlined in the International Organization for Standardization (ISO) standard 22241.

## Air Conditioning

The air conditioning system on this machine contains the fluorinated greenhouse gas refrigerant R134a (Global Warming Potential = 1430). The system contains 1.1 kg of refrigerant which has a CO<sub>2</sub> equivalent of 1.573 metric tons.

## Drive System

Description	Electronically controlled Hydrostatic drive with two variable displacement bent axis motors and two variable displacement slipper-type axial piston pumps	
Travel Speed	Infinite variable speed from 0 to 10 km/h (0 to 6.2 mph)	
Relief Valve Setting	47 500 kPa	6,890 psi

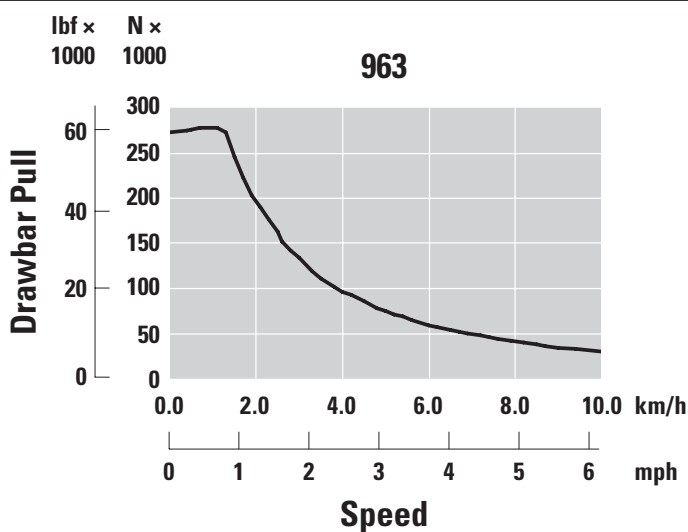
## Implement System

Description	Load sensing, variable displacement piston pump	
Maximum Continuous Flow	256 L/min at 1,800 rpm	56.3 gal/min at 1,800 rpm
Maximum Pressure	28 000 kPa	4,061 psi
Filter System	Implement return filter	

## Service Refill Capacities

Fuel Tank	320 L	84.5 gal
DEF Tank	16 L	4.2 gal
Cooling System	32 L	8.5 gal
Crankcase (with filter)	16.5 L	4.4 gal
Final Drive (each)	15 L	4.0 gal
Hydraulic Tank	90 L	23.7 gal
Pivot Shaft	1.8 L	0.5 gal

## Drawbar Pull



# 963 Track Loader – Ship Hold Specifications

## Track

Track Shoe Width	Grousers	Features
<b>Heavy Duty Sealed and Lubricated</b>		
450 mm (18 in)	Double	
450 mm (18 in)	Double	Center Hole
460 mm (18 in)	Single	Center Hole
550 mm (22 in)	Double	
550 mm (22 in)	Double	Center Hole
560 mm (22 in)	Single	Extreme Service, Center Hole

## Weights and Dimensions

	Ship Hold	
Operating Weight <sup>1</sup>	22 040 kg	48,590 lb
Shipping Weight	18 822 kg	41,495 lb
Track Shoe Width – Standard <sup>2</sup>	550 mm	22 in
Track Shoe Width – Narrow <sup>2</sup>	450 mm	18 in
Track Rollers – Each Side	7	
Number of Shoes – Each Side	38	
Track on Ground	2542 mm	100 in
Ground Pressure – Standard Shoes	68.2 kPa	9.9 psi
Ground Pressure – Narrow Shoes	83.3 kPa	12.1 psi

<sup>1</sup>Operating weight: machine with construction package, Trim blade, lubricants, 100% fuel tank and 75 kg (165 lb) operator.

<sup>2</sup>Single or double grouser, with or without center holes.

## Standards

### ROPS/FOPS

- ROPS (Rollover Protective Structure) offered by Caterpillar for the machine meets ROPS criteria ISO 3471:2008.
- FOPS (Falling Object Protective Structure) meets ISO 3449:2005 Level II.

### Brakes

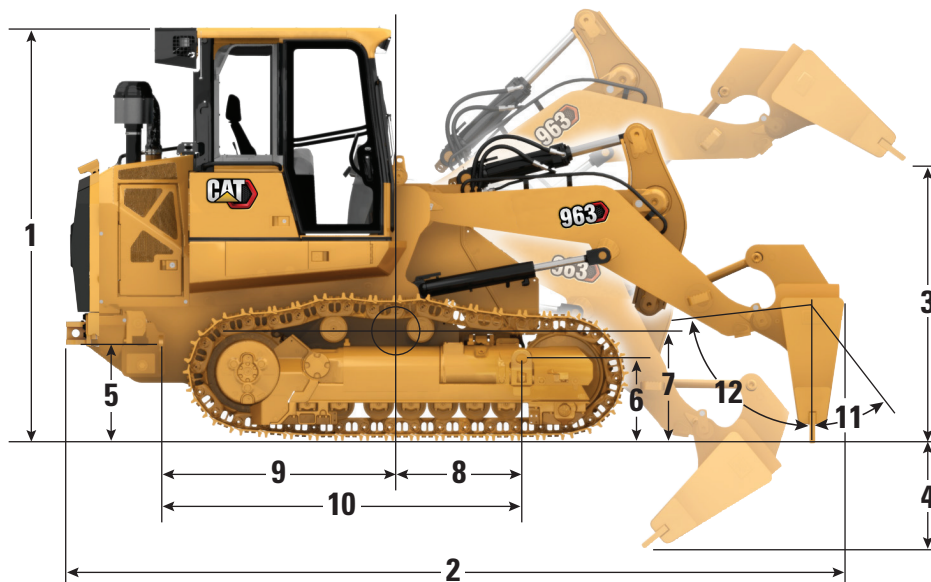
- Brakes meet the standard ISO 10265:2008.

### Sound and Vibration Information

- The declared dynamic operator sound pressure level is 74 dB(A) when “ISO 6396:2008” is used to measure the value for an enclosed cab. The measurements were conducted at 70% of the maximum engine cooling fan speed. The sound level may vary at different engine cooling fan speeds. The cab was properly installed and maintained. The measurements were conducted with the cab doors and the cab windows closed.  
NOTE: The dynamic operator sound pressure level uncertainty is  $\pm 2$  dB(A).
- Hearing protection may be needed when the machine is operated with an open operator station for extended periods, in a noisy environment or with a cab that is not properly maintained.
- The guaranteed exterior sound power level is 109 dB(A) when the value is measured according to the dynamic test procedures and the conditions that are specified in “ISO 6395:2008.” The measurements were conducted at 70% of the maximum engine cooling fan speed. The sound level may vary at different engine cooling fan speeds.
- Sound level information for machines in European Union countries and in countries that adopt the “EU Directives”: If equipped, the certification label is used to verify the environmental sound certification of the machine to the requirements of the European Union. The value that is listed on the label indicates the guaranteed exterior sound power level ( $L_{WA}$ ) at the time of manufacture for the conditions that are specified in “2000/14/EC.”

# 963 Track Loader – Ship Hold Specifications

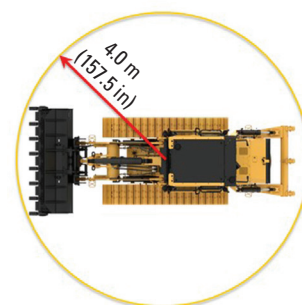
## Dimensions



Dimensions (without rear bumper)	Pin-On Coal Blade		Pin-On Iron Ore Blade		Fusion Quick Coupler Blade	
<b>1</b> Overall Height	3323 mm	130.8 in	3323 mm	130.8 in	3323 mm	130.8 in
<b>2</b> Overall Length	6655 mm	262.0 in	6614 mm	260.4 in	6759 mm	266.1 in
<b>3</b> Work Tool Cutting Edge Height Fully Raised	4399 mm	173.2 in	4391 mm	172.9 in	4451 mm	175.2 in
<b>4</b> Digging Depth – Fully Tilted Fully Retracted	1082 mm	42.6 in	910 mm	35.8 in	1113 mm	43.8 in
<b>4</b> Digging Depth – Blade Vertical	1145 mm	45.1 in	907 mm	35.7 in	1212 mm	47.7 in
Overall Width – with 450 mm (18 in) shoes	2300 mm	90.6 in	2300 mm	90.6 in	2300 mm	90.6 in
Overall Width – with 550 mm (21 in) shoes	2400 mm	94.5 in	2400 mm	94.5 in	2400 mm	94.5 in
Blade Width	3158 mm	124.3 in	3178 mm	125.0 in	3108 mm	122.4 in
<b>5</b> Rear Lifting Eye Height	848 mm	33.4 in	848 mm	33.4 in	848 mm	33.4 in
<b>6</b> Front Lifting Eye Height	673 mm	26.5 in	673 mm	26.5 in	673 mm	26.5 in
Center of Gravity Dimensions						
<b>7</b> Center of Gravity Height	786.7 mm	31.0 in	765 mm	30.1 in	814 mm	32.0 in
<b>8</b> Center of Gravity to Front Eye	689 mm	27.1 in	700 mm	27.6 in	589 mm	23.2 in
<b>9</b> Center of Gravity to Rear Eye	2514 mm	99.0 in	2502 mm	98.5 in	2613 mm	102.9 in
<b>10</b> Distance from Rear to Front Lifting Eyes	3202 mm	126.1 in	3202 mm	126.1 in	3202 mm	126.1 in
<b>11</b> Trim Blade Pitch – Forward	87°		84°		87°	
<b>12</b> Trim Blade Pitch – Rearward	23°		23°		30°	
Turning Radius	4.0 m	157.5 in	4.0 m	157.5 in	4.0 m	157.5 in

## Blades

Trim Blades	Pin-On Coal Blade		Pin-On Iron Ore		Fusion Quick Coupler Blade	
Blade Weight	2908 kg	6,411 lb	2900 kg	6,393 lb	2927 kg	6,453 lb
Blade Width	3158 mm	124 in	3178 mm	125 in	3108 mm	122 in
Blade Height	1397 mm	54.2 in	1195 mm	47.0 in	1397 mm	54.2 in
Blade Surface	4.4 m <sup>2</sup>	47.5 ft <sup>2</sup>	3.8 m <sup>2</sup>	40.9 ft <sup>2</sup>	4.3 m <sup>2</sup>	46.7 ft <sup>2</sup>



# 963 Track Loader – Ship Hold Specifications

## Buckets

Pin-On Buckets	General Purpose Bucket*		Performance Bucket**	Flat Floor Buckets*		Multi-Purpose Bucket**
Cutting Edge Type	Long Teeth & Segments	Bolt-On Full Edge	Long Teeth & Segments	Welded Flush Adapters, Long Teeth	Wide – Welded Flush Adapters, Long Teeth	Long Teeth & Segments
Bucket Weight	1890 kg (4,167 lb)	1739 kg (3,834 lb)	1950 kg (4,299 lb)	1596 kg (3,519 lb)	1857 kg (4,094 lb)	2200 kg (4,850 lb)
Bucket Width	2571 mm (101.2 in)	2571 mm (101.2 in)	2671 mm (105.2 in)	2583 mm (101.6 in)	2998 mm (118.1 in)	2575 mm (101.3 in)
Rated Capacity at 100% Fill Factor <sup>1</sup>	2.5 m <sup>3</sup> (3.2 yd <sup>3</sup> )	2.5 m <sup>3</sup> (3.2 yd <sup>3</sup> )	2.8 m <sup>3</sup> (3.7 yd <sup>3</sup> )	2.3 m <sup>3</sup> (3.0 yd <sup>3</sup> )	2.7 m <sup>3</sup> (3.5 yd <sup>3</sup> )	2.0 m <sup>3</sup> (2.6 yd <sup>3</sup> )
Rated Capacity at 110% Fill Factor			3.1 m <sup>3</sup> (4.0 yd <sup>3</sup> )			
Rated Operating Capacity <sup>2</sup>	4731 kg (10,431 lb)	4808 kg (10,599 lb)	5015 kg (11,057 lb)	4853 kg (10,698 lb)	4761 kg (10,496 lb)	4612 kg (10,169 lb)
Static Tipping Load	13 518 kg (29,802 lb)	13 736 kg (30,283 lb)	14 372 kg (31,684 lb)	13 865 kg (30,567 lb)	13 603 kg (29,989 lb)	13 178 kg (29,053 lb)
Overall Machine Length (bucket on the ground)	6831 mm (268.9 in)	6831 mm (268.9 in)	6925 mm (272.7 in)	6839 mm (269.2 in)	6839 mm (269.2 in)	6897 mm (271.5 in)
Dump Clearance at Maximum Lift and 45° Discharge	3079 mm (121.2 in)	3079 mm (121.2 in)	2988 mm (117.7 in)	3145 mm (123.8 in)	3145 mm (123.8 in)	2926 mm (115.2 in)
Reach at Maximum Lift and 45° Discharge	1231 mm (48.5 in)	1231 mm (48.5 in)	1281 mm (50.5 in)	1182 mm (46.5 in)	1182 mm (46.5 in)	1077 mm (42.4 in)
Breakout Force	181 064 N (40,705 lbf)	183 150 N (41,174 lbf)	163 503 N (36,757 lbf)	198 144 N (30,566 lb)	197 064 N (44,302 lb)	175 418 N (39,436 lbf)

Bucket and attachment offerings may vary. Please consult your Cat dealer for availability.

Fusion Quick Coupler Buckets	Fusion Buckets			
Cutting Edge Type	Long Teeth & Segments		Wide, Long Teeth & Segments	
Bucket Weight	1742 kg	3,840 lb	2036 kg	4,488 lb
Bucket Width	2571 mm	101.2 in	2998 mm	118.1 in
Rated Capacity at 100% Fill Factor <sup>1</sup>	2.3 m <sup>3</sup>	3.0 yd <sup>3</sup>	2.7 m <sup>3</sup>	3.5 yd <sup>3</sup>
Rated Operating Capacity <sup>2</sup>	4638 kg	10,225 lb	4632 kg	10,211 lb
Static Tipping Load <sup>3</sup>	13 250 kg	29,895 lb	13 233 kg	29,173 lb
Overall Machine Length (bucket on the ground)	6956 mm	273.9 in	6956 mm	273.9 in
Dump Clearance at Maximum Lift and 45° Discharge	3045 mm	119.9 in	3045 mm	119.9 in
Reach at Maximum Lift and 45° Discharge	1193 mm	47 in	1193 mm	47 in
Breakout Force	180 114 N	40,191 lbf	178 201 N	40,061 lbf

For maximum versatility, the Fusion coupler is compatible with a range of buckets, forks, rakes, material handling arm and more. Consult with your Cat dealer for compatibility.

\*Machine equipped with no counterweight.

\*\*Machine equipped with standard and additional counterweights.

<sup>1</sup>Volumetric bucket capacity as per ISO 7546:1983.

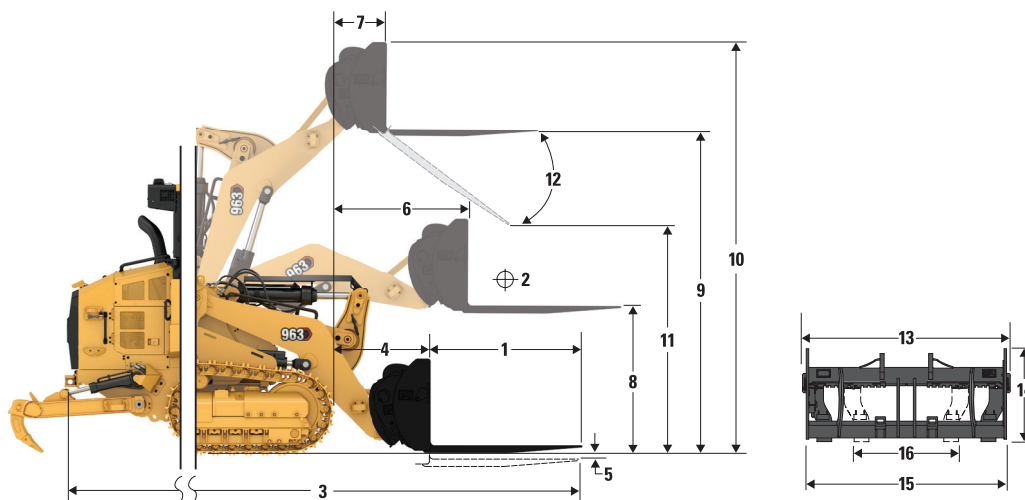
<sup>2</sup>Rated Operating Capacity should be considered with 35% Static Tipping Load as required by ISO 14397-1:2007.

<sup>3</sup>Machine equipped with standard and additional counterweights.



# 963 Track Loader – Ship Hold Specifications

## Operating Specifications with Pallet Forks



963 Track Loader*	48-in Tines		60-in Tines		72-in Tines		84-in Tines		96-in Tines	
	mm	in	mm	in	mm	in	mm	in	mm	in
1 Tine Length	1219	48.0	1524	60.0	1829	72.0	2134	84.0	2438	96.0
2 Load Center	609	24.0	762	30.0	914	36.0	1067	42.0	1219	48.0
3 Maximum Overall Length	7186	282.9	7492	295.0	7796	306.9	8101	318.9	8406	330.9
4 Reach with Forks at Ground Level	1182	46.5	1182	46.5	1182	46.5	1182	46.5	1182	46.5
5 Dig Depth	-57	-2.2	-57	-2.2	-57	-2.2	-57	-2.2	-57	-2.2
6 Reach with Arms Horizontal and Fork Level	1709	67.3	1709	67.3	1709	67.3	1709	67.3	1709	67.3
7 Reach with Fork at Maximum Height	907	35.7	907	35.7	907	35.7	907	35.7	907	35.7
8 Ground to Top of Tine with Arms Horizontal and Fork Level	1772	69.7	1772	69.7	1772	69.7	1772	69.7	1772	69.7
9 Ground to Top of Tine at Maximum Height and Fork Level	3791	149.3	3791	149.3	3791	149.3	3791	149.3	3791	149.3
10 Overall Height of Fork at Full Lift (top of carriage to ground)	4831	190.2	4831	190.2	4831	190.2	4831	190.2	4831	190.2
11 Clearance at Full Lift and Maximum Dump	2505	98.6	2259	88.9	2014	79.3	1768	69.6	1523	59.9
12 Maximum Discharge Angle from Horizontal	-54°		-54°		-54°		-54°		-54°	
13 Overall Carriage Width	2528	99.5	2528	99.5	2528	99.5	2528	99.5	2528	99.5
14 Overall Carriage Height	1130	44.5	1130	44.5	1130	44.5	1130	44.5	1130	44.5
15 Outside Tine Width (maximum spread)	2178	85.7	2178	85.7	2178	85.7	2178	85.7	2178	85.7
16 Outside Tine Width (minimum spread)	576	22.7	576	22.7	576	22.7	576	22.7	576	22.7
Tine Width (single tine)	180	7.1	180	7.1	180	7.1	180	7.1	180	7.1
Tine Thickness	90.0	3.5	90.0	3.5	90.0	3.5	90.0	3.5	90.0	3.5
	kg	lb	kg	lb	kg	lb	kg	lb	kg	lb
Tine Load Capacity (Per Pair)	22 200	48,942.6	17 800	39,242.3	14 800	32,628.4	12 700	27,998.7	11 300	24,912.2
Static Tipping Load Arm Horizontal and Fork Level	9011	19,866.9	8501	18,740.5	8017	17,674.9	7573	16,695.4	7204	15,882.5
Static Lifting Capacity Arm Horizontal and Fork Level	11 748	25,899.7	11 627	25,632.4	10 867	23,958.5	9692	21,366.4	8738	19,264.0
Rated Load (SAE J1197) **	3154	6,953.4	2975	6,559.2	2806	6,186.2	2651	5,843.4	2521	5,558.9

\*Construction configuration with 450 mm (22 in) heavy duty tracks, standard counterweight (320 kg/705 lb) and additional counterweight (310 kg/683 lb).

\*\*For crawler loaders, 35% of the tipping load or 100% of the lifting capacity, whichever is less. (SAE J1197:2011, EN-474-3:2010, ISO 14397-1:2007).

Bucket and attachment offerings may vary. Please consult your Cat dealer for availability.



# 963 Ship Hold Standard and Optional Equipment

## Standard and Optional Equipment

Standard and optional equipment may vary. Consult your Cat dealer for details.

	Standard	Optional		Standard	Optional
<b>POWER TRAIN</b>			<b>ELECTRICAL</b>		
Cat C7.1 diesel engine, turbocharged with Air-To-Air After Cooler (ATAAC)	✓		Ground Level Service Center	✓	
Engine-mounted aftertreatment to meet U.S. EPA Tier 4 Final, EU Stage V, Japan 2014, Korea Tier 4 Final emission standards	✓		24 volt heavy-duty alternator	✓	
Modular cooling system for engine air intake, oil and water	✓		Backup alarm	✓	
Hydraulic demand fan – electronically controlled, temperature sensing	✓		Two horns	✓	
Hydraulic fan, reversing	✓		Two heavy-duty batteries, high output, maintenance free, 1,120 CCA	✓	
Electro Hydrostatic Control (EHC) for transmission	✓		Main disconnect switch	✓	
Engine idle shutdown	✓		Electric starter (heavy-duty, 24 volt)	✓	
Auto engine speed control	✓		Extra lighting – two additional LED lights at the bottom of cab facing forward plus one underhood light		✓
Electric fuel pump	✓		LED flashing beacon		✓
Water separator	✓		<b>OPERATOR ENVIRONMENT</b>		
Glow plug starting aid	✓		Pressurized, sound suppressed, ROPS/ FOPS Cab with tinted glass and right side sliding window	✓	
Engine air cleaner		✓	Deluxe cab package with two sliding side windows and eight LED lights: four roof-mounted facing forward, two facing rearward and two facing side integrated in the air conditioner unit		✓
Engine air precleaner		✓	Deluxe high back seat – heated, with adjustable shock control		✓
<b>UNDERCARRIAGE</b>			Premium Plus high back seat – heated and cooled, lockable side-side isolator		✓
Heavy duty undercarriage and tracks (38 sections), 1850 mm (72.8 in) track gauge	✓		Adjustable armrests	✓	
Oscillating track roller frames	✓		Electro Hydraulic, seat mounted control levers with faster processing	✓	
Track guiding guards, end section	✓		V-pattern and pedal steering controls		✓
Hydraulic track adjuster	✓		Joystick steering controls		✓
Sprocket rims with replaceable bolt-on tough steel segments	✓		Joystick implement control		✓
Sprocket guards	✓		Two-lever implement control		✓
Seven track rollers per side, with two upper carrier rollers, lifetime lubricated	✓		Seat belt, retractable, with buckling indicator on dash	✓	
Idlers, conventional type, lifetime lubricated	✓		Four-point restraint ready seat	✓	

(continued on next page)

# 963 Ship Hold Standard and Optional Equipment

## Standard and Optional Equipment *(continued)*

Standard and optional equipment may vary. Consult your Cat dealer for details.

	Standard	Optional		Standard	Optional
<b>OPERATOR ENVIRONMENT <i>(continued)</i></b>			<b>OTHER STANDARD EQUIPMENT</b>		
Air conditioning and heating	✓		Rear and front lifting device	✓	
Heater/defroster with automatic temperature control and automatic blower control	✓		Durable metal fender	✓	
Cab air powered precleaner		✓	Exterior sound suppression	✓	
Rearview mirror, inside, adjustable	✓		Load sensing implement pump with variable displacement	✓	
Radio ready. Includes speakers, antenna and 12V power outlet and 5V USB port	✓		Z-bar loader linkage	✓	
Radio – FM Ready Kit		✓	Implement cylinders with sensors	✓	
Radio – Bluetooth & Aux & Mic		✓	Engine enclosure with lockable doors	✓	
Radio – Bluetooth & Aux & Mic – <b>Dab+</b>		✓	Debris resistant radiator core (six fins-per-inch)	✓	
Radio – Bluetooth & Aux & Mic – <b>Sirius</b>		✓	Hinged radiator guard and swing out fan	✓	
Parking brake switch and “brake-on” indicator light	✓		4 × 2 easy tie-down points on chassis	✓	
Implement lock-out switch	✓		<b>GUARDING</b>		
High Definition rearview camera	✓		Full bottom guards	✓	
254 mm (10 in) color touchscreen display with integrated rear camera display and machine slope indicator	✓		Idler guard (none)		✓
Three selectable working modes (Auto, Power, Eco)	✓		Idler guard		✓
Operator programmable lift and tilt kickouts	✓		Idler guard – ship hold		✓
Machine Pitch and Roll indicate	✓		Front light guard		✓
Bucket shake	✓		Windshield guard		✓
Remote services (Troubleshoot/Remote Flash)		✓	Lift cylinder guard	✓	
Heavy-duty rubber floor mat	✓		Tilt cylinder guard	✓	
Windshield washers and wipers, multiple speed, front and rear	✓		Two-piece final drive guard		✓
Durable metal roof	✓		Three-piece final drive guard		✓
Coat hook	✓		Final drive bottom guard		✓
Storage compartments under left armrest	✓		Track roller guard		✓
Document holder on right console	✓				

*(continued on next page)*

# 963 Ship Hold Standard and Optional Equipment

## Standard and Optional Equipment *(continued)*

Standard and optional equipment may vary. Consult your Cat dealer for details.

	Standard	Optional		Standard	Optional
<b>BUCKETS*</b>			<b>MAINTENANCE</b>		
General purpose – 2.5 m <sup>3</sup> (3.25 yd <sup>3</sup> )		✓	Standard lubricant		✓
General purpose with welded flush adaptor – 2.3 m <sup>3</sup> (3.0 yd <sup>3</sup> )		✓	Bio lubricant		✓
Heavy-duty general purpose – 2.5 m <sup>3</sup> (3.25 yd <sup>3</sup> )		✓	Cat extended life coolant	✓	
Multi-purpose – 2.0 m <sup>3</sup> (2.6 yd <sup>3</sup> )		✓	Service package		✓
Heavy-duty multi-purpose – 2.0 m <sup>3</sup> (2.6 yd <sup>3</sup> )		✓	Extended service package – manual hydraulic system enabling cab tilt and lock at 30 degrees safely in the field, shovel holder bracket (shovel not included)		✓
General purpose with full bolted cutting edge – 2.5 m <sup>3</sup> (3.25 yd <sup>3</sup> )		✓	High speed oil change		✓
Performance general purpose – 2.8 m <sup>3</sup> (3.7 yd <sup>3</sup> )		✓	Ecology drains on hydraulic oil tank	✓	
Wide flush general purpose – 2.9 m <sup>3</sup> (3.8 yd <sup>3</sup> )		✓	Oil sampling valves	✓	
Quick coupler, general purpose – 2.3 m <sup>3</sup> (3.0 yd <sup>3</sup> )		✓	Cat XT hoses	✓	
Quick coupler, general purpose LGP – 2.7 m <sup>3</sup> (3.5 yd <sup>3</sup> )		✓	HYDO Advanced 10	✓	
Heavy-duty landfill bucket – 3.1 m <sup>3</sup> (4.0 yd <sup>3</sup> )		✓	Implement oil return filter in hydraulic tank	✓	
Multi-purpose heavy-duty landfill bucket – 2.7 m <sup>3</sup> (3.5 yd <sup>3</sup> )		✓	<b>REAR ATTACHMENTS</b>		
No bucket		✓	Bumper	✓	
<b>BLADES*</b>			<b>FUEL TANK</b>		
Trim Blade – Coal – 3158 mm (124 in)		✓	Fuel tank	✓	
Trim Blade – Iron Ore – 3178 mm (125 in)		✓	Fast Fill fuel tank		✓
Trim Blade – Fusion Quick Coupler – 3108 mm (122 in)		✓	Fuel tank refilling pump		✓
<b>HYDRAULICS</b>			Sediment hand pump		✓
Two-valve hydraulics, two-lever		✓	<b>OTHER EQUIPMENT</b>		
Two-valve hydraulics, joystick		✓	Access package		✓
Three-valve hydraulics, front, joystick		✓	Jacket water heater (110 V)		✓
Three-valve hydraulics, rear, joystick		✓	Jacket water heater (240 V)		✓
Three-valve hydraulics, rear, two-lever		✓	Fusion Quick Coupler		✓
Four-valve hydraulics, front and rear, joystick		✓	<b>TECHNOLOGY PRODUCTS</b>		
Standard hydraulic lines		✓	Product Link Ready	✓	
Quick coupler hydraulic lines		✓	Product Link – Satellite		✓
			Product Link – Dual Satellite and Cellular		✓
			No Product Link		✓

\*Bucket and attachment offerings may vary. Please consult your Cat dealer for availability.

# 963

## Track Loader Partial Steel Mill

***Track loaders provide a rugged, agile option for steel mill and other high temperature work. Specialized features are available from the factory to equip your track loader to perform in these especially harsh conditions.***

### High Temperature Undercarriage

- Purpose-built undercarriage includes high temperature seals in rollers, idlers, pivot shafts and final drives.
- Steel bar welded on the bottom of the track roller frame helps prevent heat distortion.
- Duo-cone™ seal guards on the final drives.
- Optional track roller guard protects against abrasion.

### Steel Mill Cab

- Various heat shields inside lower doors, underneath the operator station, around air ducts and air conditioning lines.
- Heat resistant floor mat.
- Double laminated windshield 18 mm/0.7 in thick.
- Front windshield grill and thermal net against slag projections.
- Cab windows silicone sealed.
- Cab door glazing designed to protect windows against slag splatter from tracks.
- Additional metallic roof protection.
- Eight wide flood lights (four front, two rear, two sides) heat resistant, equipped with silicone sleeves.
- Metallic door handles and roof act as a heat shield.
- Air conditioning vents on both sides of operator seat post.

### Additional Protective Features

- Fire retardant oil.
- Heavy-duty front and rear machine guards.
- Sealed track link with no lubrication fluid.
- Double grouser or triple grouser shoes.
- Slag bucket.



### Important Notice:

This package DOES NOT feature all the other modifications required to allow the machine to run on hot slag. Examples: steel fuel tank, heat insulation for harnesses, hydraulic hoses, water, heater and air lines as well as heat shields for the tanks.

*Please consult with your Cat dealer regarding Steel Mill package availability.*

# 963 Track Loader – Partial Steel Mill Specifications

## Engine

Engine Model	Cat C7.1	
Emissions	U.S. EPA Tier 4 Final/ EU Stage V/Japan 2014/ Korea Tier 4 Final	
Build Number	12A	
Net Power – ISO 9249:2007/ SAE J1349:2011	151 kW	202 hp
Net Power – ISO 9249:2007/ SAE J1349:2011 (DIN)	204 mhp	
Gross Power SAE J1995:2014	170 kW	228 hp
Engine Power ISO 14396:2002	168 kW	225 hp
Engine Power ISO 14396:2002 (DIN)	227 mhp	
Bore	105 mm	4.1 in
Stroke	135 mm	5.3 in
Displacement	7.01 L	427.8 in <sup>3</sup>

- Engine power at 1,800 rpm.
- Inline six-cylinder diesel engine with twin turbos, charged with ATAAC and engine mounted aftertreatment.
- No derating required up to 3000 m (9,842 ft) altitude.
- The net power advertised is the power available at the flywheel when the engine is equipped with fan running up to maximum speed, alternator, air cleaner and aftertreatment.
- All non-road Tier 4 Interim and Final, Stage IIIB, IV and V, Japan 2014 (Tier 4 Final) and Korea Tier 4 Final diesel engines are required to use only Ultra Low Sulfur Diesel (ULSD) fuels containing 15 ppm EPA/10 ppm EU (mg/kg) sulfur or less. Biodiesel blends up to B20 (20% blend by volume) are acceptable when blended with 15 ppm (mg/kg) sulfur or less ULSD. B20 should meet ASTM D7467 specification (biodiesel blend stock should meet Cat biodiesel spec, ASTM D6751 or EN 14214). Cat DEO-ULS™ or oils that meet the Cat ECF-3, API CJ-4, and ACEA E9 specification are required. Consult your OMM for further machine specific fuel recommendations.
- Diesel Exhaust Fluid (DEF) used in Cat Selective Catalytic Reduction (SCR) systems must meet the requirements outlined in the International Organization for Standardization (ISO) standard 22241.

## Air Conditioning

The air conditioning system on this machine contains the fluorinated greenhouse gas refrigerant R134a (Global Warming Potential = 1430). The system contains 1.1 kg of refrigerant which has a CO<sub>2</sub> equivalent of 1.573 metric tons.

## Drive System

Description	Electronically controlled Hydrostatic drive with two variable displacement bent axis motors and two variable displacement slipper-type axial piston pumps	
Travel Speed	Infinite variable speed from 0 to 10 km/h (0 to 6.2 mph)	
Relief Valve Setting	47 500 kPa	6,890 psi

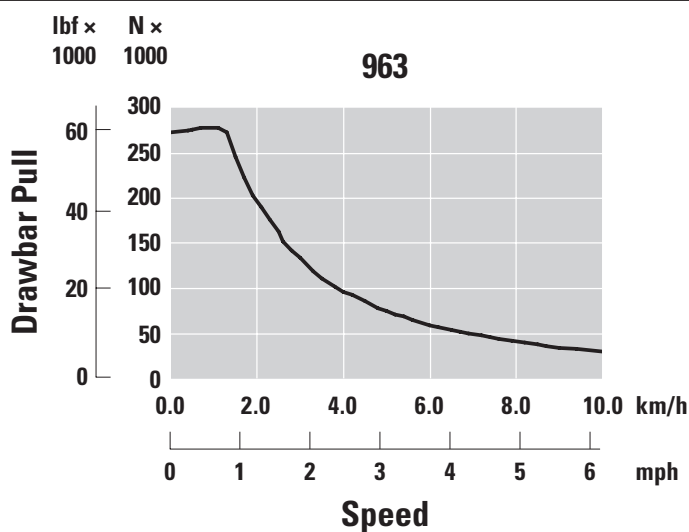
## Implement System

Description	Load sensing, variable displacement piston pump	
Maximum Continuous Flow	256 L/min at 1,800 rpm	56.3 gal/min at 1,800 rpm
Maximum Pressure	28 000 kPa	4,061 psi
Filter System	Implement return filter	

## Service Refill Capacities

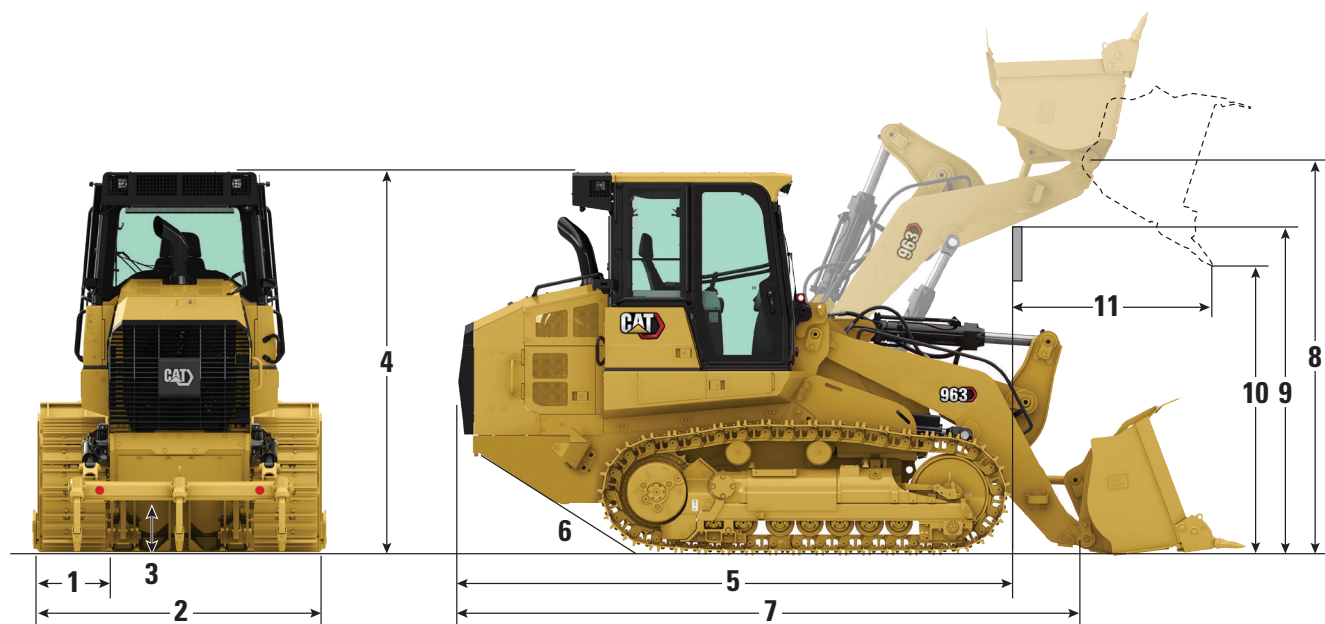
Fuel Tank	320 L	84.5 gal
DEF Tank	16 L	4.2 gal
Cooling System	32 L	8.5 gal
Crankcase (with filter)	16.5 L	4.4 gal
Final Drive (each)	15 L	4.0 gal
Hydraulic Tank	90 L	23.7 gal
Pivot Shaft	1.8 L	0.5 gal

## Drawbar Pull



# 963 Track Loader – Partial Steel Mill Specifications

## Weights and Dimensions



Construction configuration shown.

	Partial Steel Mill	
Operating Weight <sup>1</sup>	22 004 kg	48,510 lb
Shipping Weight	18 815 kg	41,480 lb
<b>1</b> Track Shoe Width		
Triple Grouser	430 mm	17 in
Double Grouser	450 mm	18 in
Track Rollers – Each Side	7	
Number of Shoes – Each Side	38	
Track on Ground	2542 mm	100.0 in
Ground Pressure		
430 mm (17 in) triple grouser shoes	87.0 kPa	12.6 psi
450 mm (18 in) double grouser shoes	83.2 kPa	12.1 psi
<b>2</b> Overall Machine Width with Slag Bucket	2566 mm	101 in
<b>3</b> Ground Clearance	471 mm	18.5 in
<b>4</b> Machine Height to Top of Cab	3366 mm	132.5 in
<b>5</b> Machine Length to Front of Tracks	4843 mm	194.6 in
<b>6</b> Ramp Angle	29°	
<b>7</b> Overall Machine Length with Slag Bucket	6851 mm	269.7 in
<b>8</b> Hinge Pin Height at Maximum Lift	3940 mm	155.1 in
<b>9</b> Lift Arm Clearance at Maximum Lift	3590 mm	141.3 in
<b>10</b> Dump Clearance at Maximum Lift and 45° Discharge	2913 mm	114.7 in
<b>11</b> Reach at Maximum Lift and 45° Discharge	1155 mm	45.5 in
Turning Radius	4.0 m	157.5 in

<sup>1</sup>Operating weight: machine with partial steel mill package, Slag bucket with teeth and segments, lubricants, 100% fuel tank and 75 kg (165 lb) operator. Bucket and attachment offerings may vary. Please consult your Cat dealer for availability.

# 963 Track Loader – Partial Steel Mill Specifications

## Buckets

Pin-On Buckets – Standard Linkage	Slag Bucket	
Cutting Edge Type	Long teeth and segment	
Bucket Weight	2872 kg	6,332 lb
Bucket Width	2564 mm	101.0 in
Rated Capacity at 100% Fill Factor <sup>1</sup>	2.3 m <sup>3</sup>	3.0 yd <sup>3</sup>
Rated Operating Capacity <sup>2</sup>	4983 kg	10,985 lb
Static Tipping Load <sup>3</sup>	14 236 kg	31,386 lb
Breakout Force	163 944 N	36,856 lbf

<sup>1</sup>Volumetric bucket capacity as per ISO 7546:1983.

<sup>2</sup>Rated Operating Capacity should be considered with 35% Static Tipping Load as required by ISO 14397-1:2007.

<sup>3</sup>Machine equipped with standard and additional counterweights.

## Standards

### ROPS/FOPS

- ROPS (Rollover Protective Structure) offered by Caterpillar for the machine meets ROPS criteria ISO 3471:2008.
- FOPS (Falling Object Protective Structure) meets ISO 3449:2005 Level II.

### Brakes

- Brakes meet the standard ISO 10265:2008.

### Sound and Vibration Information

- The declared dynamic operator sound pressure level is 74 dB(A) when “ISO 6396:2008” is used to measure the value for an enclosed cab. The measurements were conducted at 70% of the maximum engine cooling fan speed. The sound level may vary at different engine cooling fan speeds. The cab was properly installed and maintained. The measurements were conducted with the cab doors and the cab windows closed.  
NOTE: The dynamic operator sound pressure level uncertainty is  $\pm 2$  dB(A).
- Hearing protection may be needed when the machine is operated with an open operator station for extended periods, in a noisy environment or with a cab that is not properly maintained.
- The guaranteed exterior sound power level is 109 dB(A) when the value is measured according to the dynamic test procedures and the conditions that are specified in “ISO 6395:2008.” The measurements were conducted at 70% of the maximum engine cooling fan speed. The sound level may vary at different engine cooling fan speeds.
- Sound level information for machines in European Union countries and in countries that adopt the “EU Directives”: If equipped, the certification label is used to verify the environmental sound certification of the machine to the requirements of the European Union. The value that is listed on the label indicates the guaranteed exterior sound power level ( $L_{WA}$ ) at the time of manufacture for the conditions that are specified in “2000/14/EC.”



# 963 Partial Steel Mill Standard and Optional Equipment

## Standard and Optional Equipment

Standard and optional equipment may vary. Consult your Cat dealer for details.

	Standard	Optional		Standard	Optional
<b>POWER TRAIN</b>			<b>ELECTRICAL</b>		
Cat C7.1 diesel engine, turbocharged with Air-To-Air After Cooler (ATAAC)	✓		Ground Level Service Center	✓	
Engine-mounted aftertreatment to meet U.S. EPA Tier 4 Final, EU Stage V, Japan 2014, Korea Tier 4 Final emission standards	✓		24 volt heavy-duty alternator	✓	
Modular cooling system for engine air intake, oil and water	✓		Backup alarm	✓	
Hydraulic demand fan – electronically controlled, temperature sensing	✓		Two horns	✓	
Hydraulic fan, reversing	✓		Two heavy-duty batteries, high output, maintenance free, 1,120 CCA	✓	
Electro Hydrostatic Control (EHC) for transmission	✓		Main disconnect switch	✓	
Engine idle shutdown	✓		Electric starter (heavy-duty, 24 volt)	✓	
Auto engine speed control	✓		LED flashing beacon		✓
Electric fuel pump	✓		<b>OPERATOR ENVIRONMENT</b>		
Water separator	✓		Steel mill cab – pressurized, sound suppressed, ROPS/FOPS cab, with silicone sealed glass and heavy-duty laminated windshield glass	✓	
Glow plug starting aid	✓		Deluxe high back seat – heated, with adjustable shock control		✓
Engine air cleaner		✓	Premium Plus high back seat – heated and cooled, lockable side-side isolator		✓
Engine air precleaner		✓	Adjustable armrests	✓	
<b>UNDERCARRIAGE</b>			Electro Hydraulic, seat mounted control levers with faster processing	✓	
Heavy duty undercarriage and tracks (38 sections), 1850 mm (72.8 in) track gauge	✓		V-pattern and pedal steering controls		✓
Sealed Heavy Duty Tracks		✓	Joystick steering controls		✓
430 mm (17 in) High Temperature Heavy Duty Sealed Track – Triple Grousers		✓	Joystick implement control		✓
450 mm (18 in) High Temperature Heavy Duty Sealed Track – Double		✓	Two-lever implement control		✓
Oscillating track roller frames	✓		Seat belt, retractable, with buckling indicator on dash	✓	
Track guiding guards, end section	✓		Four-point restraint ready seat	✓	
Hydraulic track adjuster	✓		Air conditioning and heating	✓	
Sprocket rims with replaceable bolt-on tough steel segments	✓				
Sprocket guards	✓				
Seven track rollers per side, with two upper carrier rollers, lifetime lubricated	✓				
Idlers, conventional type, lifetime lubricated	✓				

(continued on next page)



# 963 Partial Steel Mill Standard and Optional Equipment

## Standard and Optional Equipment *(continued)*

Standard and optional equipment may vary. Consult your Cat dealer for details.

	Standard	Optional		Standard	Optional
<b>OPERATOR ENVIRONMENT <i>(continued)</i></b>			<b>OTHER STANDARD EQUIPMENT</b>		
Heater/defroster with automatic temperature control and automatic blower control	✓		Durable metal fender	✓	
Rearview mirror, inside, adjustable	✓		Exterior sound suppression	✓	
Radio ready. Includes speakers, antenna and 12V power outlet and 5V USB port	✓		Load sensing implement pump with variable displacement	✓	
Radio – FM Ready Kit		✓	Z-bar loader linkage	✓	
Radio – Bluetooth & Aux & Mic		✓	Implement cylinders with sensors	✓	
Parking brake switch and “brake-on” indicator light	✓		Engine enclosure with lockable doors	✓	
Implement lock-out switch	✓		Debris resistant radiator core (six fins-per-inch)	✓	
High Definition rearview camera	✓		Hinged radiator guard and swing out fan	✓	
254 mm (10 in) color touchscreen display with integrated rear camera display and machine slope indicator	✓		4 × 2 easy tie-down points on chassis	✓	
Three selectable working modes (Auto, Power, Eco)	✓		<b>GUARDING</b>		
Operator programmable lift and tilt kickouts	✓		Heavy-duty front guard	✓	
Machine Pitch and Roll indicate	✓		Windshield guard with metallic screen	✓	
Bucket shake	✓		Full bottom guards	✓	
Remote services (Troubleshoot/Remote Flash)		✓	Idler guard (none)		✓
Heavy-duty rubber floor mat	✓		Idler guard		✓
Windshield washers and silicone wipers, multiple speed, front and rear	✓		Idler guard – ship hold		✓
Durable metal roof	✓		Front light guard		✓
Coat hook	✓		Windshield guard		✓
Storage compartments under left armrest	✓		Lift cylinder guard	✓	
Document holder on right console	✓		Tilt cylinder guard	✓	
			Two-piece final drive guard		✓
			Three-piece final drive guard		✓
			Final drive bottom guard		✓
			Track roller guard		✓

*(continued on next page)*

# 963 Partial Steel Mill Standard and Optional Equipment

## Standard and Optional Equipment *(continued)*

Standard and optional equipment may vary. Consult your Cat dealer for details.

	Standard	Optional		Standard	Optional
<b>BUCKETS*</b>			<b>REAR ATTACHMENTS</b>		
Slag bucket – 2.3 m <sup>3</sup> (3.0 yd <sup>3</sup> )		✓	Bumper		✓
General purpose – 2.5 m <sup>3</sup> (3.25 yd <sup>3</sup> )		✓	Striker bars		✓
General purpose with welded flush adaptor – 2.3 m <sup>3</sup> (3.0 yd <sup>3</sup> )		✓	<b>FUEL TANK</b>		
Heavy-duty general purpose – 2.5 m <sup>3</sup> (3.25 yd <sup>3</sup> )		✓	Fuel tank	✓	
General purpose with full bolted cutting edge – 2.5 m <sup>3</sup> (3.25 yd <sup>3</sup> )		✓	Fast Fill fuel tank		✓
Performance general purpose – 2.8 m <sup>3</sup> (3.7 yd <sup>3</sup> )		✓	Sediment hand pump		✓
Wide flush general purpose – 2.9 m <sup>3</sup> (3.8 yd <sup>3</sup> )		✓	<b>OTHER EQUIPMENT</b>		
No bucket		✓	Access package		✓
<b>HYDRAULICS</b>			<b>TECHNOLOGY PRODUCTS</b>		
Two-valve hydraulics, two-lever		✓	Product Link Ready	✓	
Two-valve hydraulics, joystick		✓	Product Link – Satellite		✓
Standard hydraulic lines	✓		Product Link – Dual Satellite and Cellular		✓
<b>MAINTENANCE</b>			No Product Link		✓
Standard lubricant		✓	<b>COUNTERWEIGHTS</b>		
Bio lubricant		✓	Light counterweight 320 kg (705 lb)		✓
Ecosafe lubricant (steel mill)	✓		Light counterweight, additional 310 kg (683 lb)		✓
Cat extended life coolant	✓				
Extended service package – manual hydraulic system enabling cab tilt and lock at 30 degrees safely in the field, shovel holder bracket (shovel not included)	✓				
High speed oil change		✓			
Ecology drains on hydraulic oil tank	✓				
Oil sampling valves	✓				
Cat XT hoses	✓				
HYDO Advanced 10	✓				
Implement oil return filter in hydraulic tank	✓				

\*Bucket and attachment offerings may vary. Please consult your Cat dealer for availability.



オフロード法2014年  
基準適合

For more complete information on Cat products, dealer services, and industry solutions, visit us on the web at [www.cat.com](http://www.cat.com)

© 2020 Caterpillar  
All rights reserved

Materials and specifications are subject to change without notice. Featured machines in photos may include additional equipment. See your Cat dealer for available options.

CAT, CATERPILLAR, LET'S DO THE WORK, their respective logos, "Caterpillar Corporate Yellow," the "Power Edge" and Cat "Modern Hex" trade dress as well as corporate and product identity used herein, are trademarks of Caterpillar and may not be used without permission.

AEXQ2919-02 (12-2020)  
Replaces AEXQ2919-01  
Build Number: 12A  
(Aus-NZ, Eur, Japan,  
Korea, N Am)

